

1954 HUDSON HORNET (with Hydra-Matic)

THE STORY IN FIGURES

PERFORMANCE

CHASSIS DYNAMOMETER TEST

(Checked on Clayton Mfg. Co.'s chassis dynamometer; all tests are made under full load, which is similar to climbing a hill at full throttle)

RPM	MPH	ROAD HP
1200	32	39
2000	55	64
2500	70	82
2800	78	85 (maximum obtainable under any conditions)

ACCELERATION

(In seconds; checked with fifth wheel and electric speedometer)

Standing start 1/4-mile (71mph; D4 range)	19.1
0-30 mph (32, car speedometer; D4 range)	4.5
0-60 mph (63, car speedometer; D4 range)	14.8
10-30mph (D4 range)	3.7
30-50mph (04 range)	6.6
50-80mph (04 range)	16.5

TOP SPEED

(In miles per hour; clocked speeds over surveyed 1/4 -mile)

Fastest one-way run	102.04
Slowest one-way run	99.66
Average of four runs	100.34

FUEL CONSUMPTION

(in miles per gallon; checked with fuel flowmeter, fifth wheel, and electric speedometer)

Steady 30 mph	22.9
Steady 45 mph	20.3
Steady 60 mph	17.8
Steady 75 mph	14.3
Simulated traffic over measured course	15.1
Total mileage driven and overall average for entire test	857 miles @ 14.4

BRAKE STOPPING DISTANCE

(To the nearest foot; checked with electrically actuated detonator)

Stopping distance at:

30 mph	50 ft.
45 mph	101 ft.
60 mph	196 ft.

GENERAL SPECIFICATIONS

ENGINE

Type	L-head, six-cylinder
Bore & stroke	3 13/16 x 4 1/2
Stroke bare ratio	1.18:1
Compression ratio	7.5:1
Displacement	308 Cu. in
Advertised bhp	170 @ 4000 rpm
Bhp per cu. in.	0.55
Piston travel @ max. bhp	3000 ft. per min.
Maximum torque	278 lbs-ft. @ 2600 rpm
Maximum bmep	136.1 psi

DRIVE SYSTEM

Standard transmission	Three-speed synchromesh using helical gears
Ratios	1st 2.57, 2nd 1.68, 3 1.00, reverse 3.49
Automatic transmission	Dual-Range Hydra-Matic, fluid coupling with gears
Ratios	1st 3.82, 2nd 2.63, 3 1.45, reverse 4.30
Overdrive transmission	Planetary type with manual lockout and accelerator downshift
Ratio	0.7:1 (overall 3.19)
Rear axle ratios	Conventional 4.09, Hydra-Matic 3.07, Overdrive 4.55

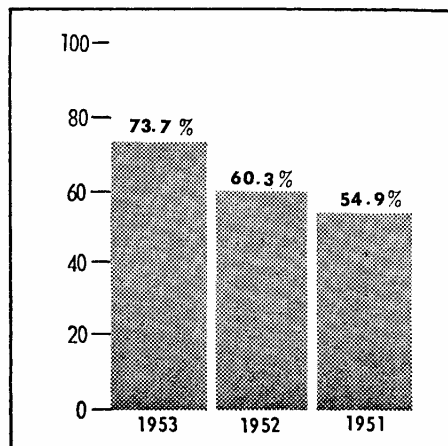
DIMENSIONS

Wheelbase	123 7/8 in.
Tread	Front 58 1/2 in. rear 55 1/2 in.
Wheelbase/tread ratio	2.17:1
Overall width	77 5/8 in.
Overall length	208 7/8 in.
Overall height	60 3/8 in.
Turning diameter	Right 43 ft. 10 in., left 40 ft. 7 in.
Turns lock to lock	5 1/4
Curb weight	4110 lbs. (factory shipping wt. 3620 lbs.)
Weight bhp ratio	24.1:1
Weight distribution	Front 56%. rear 44%
Tire size	7.60 x 15
Tire loading	Front 98%, rear 84%

Power brakes	\$ 43
Radio	\$100
Heater	\$ 74
Direction signals	\$ 20
White sidewall tires (additional cost per set. 7.60 x 15)	\$ 29

DEPRECIATION

Percentage of original value retained by similar previous models at time of publication



PRICES

(Including retail price at main factory, federal tax, and delivery and handling charges, but not freight)

Four-door sedan	\$2769
Club coupe	\$2742
Convertible	NA.
Hardtop	\$2988

ACCESSORIES

Hydra-Matic	\$178
Overdrive	\$111
Twin H-Power	\$ 86
Power steering	\$177

ESTIMATED COST PER MILE

(The Estimated Cost per Mile is given for comparative purposes and is not intended as a guide to the cost of operating a particular make or car within that make. To provide this comparison, Motor Trend has selected the following maintenance items for each car tested, regardless or whether or not the car would actually require them during the first year of operation)

Cost of year's gasoline (based on overall mileage of test car)	\$202.52
Cost of insurance	\$148.40

(Includes: \$50,000 and \$100,000 bodily injury liability, \$5000 property damage, \$500 medical payments, comprehensive, \$50-deductible collision)

Maintenance:

Wheel alignment	\$13.60
Brake reline (front only)	\$19.65
Automatic transmission (adjust, change lubricant)	\$15.73

Major tune-up	\$13.20
---------------	---------

(Labor only; includes: Clean and adjust or renew points. Adjust spark timing, carburetor, valves, fanbelt and generator. Clean air cleaner, battery terminals and fuel lines. Check coil, condenser, vacuum control, heat control, compression and vacuum. Tighten cylinder head, manifold and hose connections)

First year operating (based on 10,000-mile annual average)	\$0.01
--	--------

COST OF PARTS AND LABOR

(These are prices for parts and labor required in various repairs and replacements, provided for a comparison of prices for these sample operations in various makes)

	PARTS	LABOR
Distributor	\$25.45	\$ 2.40
Battery	\$21.50	
Fuel pump	\$15.00	\$ 2.40
Valve grind	\$ 3.15	\$25.60
One front fender	\$42.25	\$29.00
Bumper	\$81.5	<u>\$53.00</u>
Two tires	<u>\$70.80</u>	
TOTALS	\$259.70	\$62.40