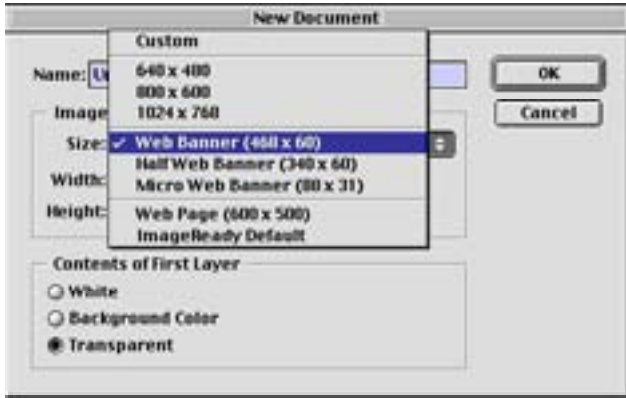


Image Ready How-to: Animation – Single Layer motion and tweening



Open **Image Ready**. Start by making a new document. Choose **Web Banner** from the **Size** pull-down.

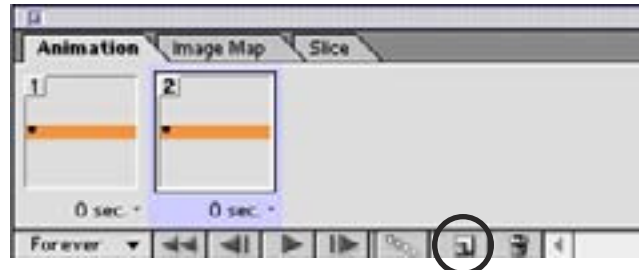
- I. Create an object using the polygon tools in the toolbar.
OR use the pencil or text tools
– just make something on a **NEW** layer*.

Look at the Animation Palette (if not visible go to Window menu to **Show Animation**).

Make a duplicate frame by clicking on the **NEW** icon.



* To draw with pencil tool or other non-vector based tool, first look at the Layers palette and click the New Layer icon at the bottom.



- II. Choose the **Move** tool from the toolbar (arrow).

Select your layer in the layers palette and move it a little to the right. (notice the arrow keys on the keyboard move them one pixel at a time).

Click the **Play** button in the animation palette to see what you've done.

Now click the **Stop** button and repeat the steps to create a new frame, then move your layer again, etc.



New Frame	<p>Note the Animation palette pull-down menu. From here, you can copy multiple frames, and paste multiple frames.</p> <p>Notice also the two important check-able options at the bottom: "Create Layer for Each New Frame" and "New layers visible in all states/frames (should both be un-checked for our purposes).</p>
Delete Frames	
Delete Animation	
Copy Frames	
Paste Frames...	
Select All Frames	
Tween...	
Reverse Frames	
Optimize Animation...	
Make Frames From Layers	
Flatten Frames Into Layers	
Create Layer for Each New Frame	
<input checked="" type="checkbox"/> New Layers Visible in All States/Frames	
Palette Options...	

From this palette you may also "tween." Select (shift-click) TWO frames. Go to the pull-down to TWEEN...

- III. To automatically "tween" frames:

Let's start again with just two frames (trash the other ones you made). Move the object in frame 1 to the far left side of the image. Click on frame 2 in the animation palette and move it to the far right side.

Select (shift-click) the two frames.

Go to the pull-down menu in the Animation palette to **tween...**

Choose the number of frames you wish to add (5 or 10 should be fine). Select the method of tweening – **Position, Opacity** or **Effects**. (layer and text effects). Let's start just with **Position**.

Selecting just the right side frame (frame 2) experiment with text or layer effects on just the right side frame, **and opacity** in the Layers palette, then re-tween them to see your changes.

Image Ready How-to: Animation – Second Layer

Now that you're a master animator, let's try a second layer!

In this example I added a layer for the ball to be "squished" at the bottom of its bounce.

Duplicate your last frame (by clicking on the New frame icon in the Animation palette).

Go to the Layers palette and duplicate your layer by dragging its icon to the New Layer icon in the layers palette (or go to the pull-down to **duplicate layer**.)

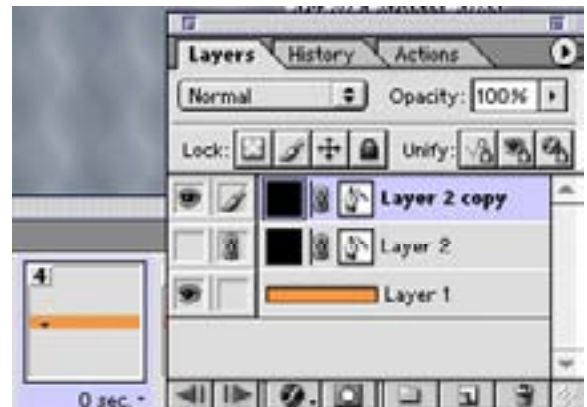
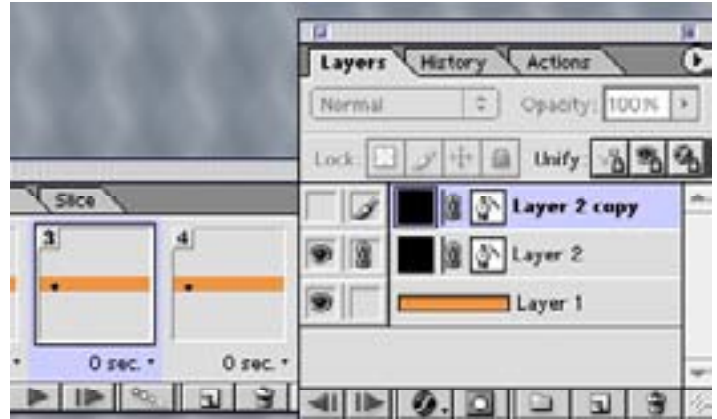
Use the move tool to select the object and go to the EDIT menu to TRANSFORM and squish it.

Make the original layer invisible by clicking on the **eyeball** icon next to the layer in the layers palette.

Play the animation, and note which layers are turned on by which frames.

If ImageReady turned on your new layer across all frames, you can go back and one by one turn it off or select (shift-click) multiple frames and turn it off in all of them at once.

Remember that option in the animation palette: uncheck "New layers visible in all states/frames." That will prevent that from happening.



New Frame	Note the Animation palette pull-down menu. From here, you can copy multiple frames, and paste multiple frames.
Delete Frames Delete Animation	
Copy Frames	Notice also the two important check-able options at the bottom: "Create Layer for Each New Frame" and "New layers visible in all states/frames" (should both be un-checked for our purposes).
Paste Frames...	
Select All Frames	
Tween...	
Reverse Frames	
Optimize Animation...	
Make Frames from Layers	
Flatten Frames into Layers	
Create Layer for Each New Frame	
<input checked="" type="checkbox"/> New Layers Visible in All States/Frames	
Palette Options...	

From this palette you may also "tween." Select (shift-click) TWO frames. Go to the pull-down to TWEEN...



To save as a GIF file for the web: First **Save** it as a .PSD file so that you can edit the layers later if you need to fix anything.

Then, go to **File** to **Save Optimized...**

(To save as a quicktime movie, go to **Export Original...**)