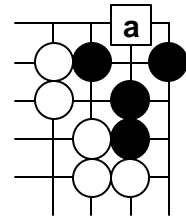


Roland Crowl's notes on Life and Death

Books Kano
Davies
Cho

Minimal life positions

double diamond or use edge to complete
never occur in game—guide for living/killing when confronted by small space
example at right—**a** is vital point



Techniques—for killing; living is prevention
enclose—it all starts here
reduce—smaller is always better
placement—big eye; **a** at right
hane—reduce space
throw-in—false eye

Seven in *sente*

canonical six die—eight live position
effect of variants

Other known positions

five in corner—*sente*—two fewer stones
two-space hat—dead
five with hat—*sente*—sixth doesn't help
L-group—dead—just too small
tripod—alive
long L-group—*maden ko* or *seki*—is it worth the fight?
carpenter's square—white *ko*; black lives
door group—dead
comb group—alive
giant comb—*sente*—weakness underneath