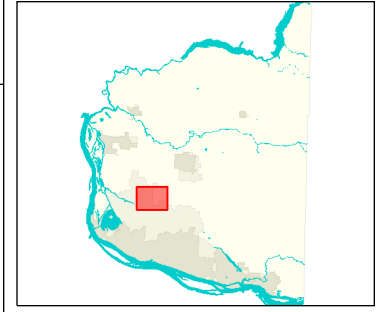
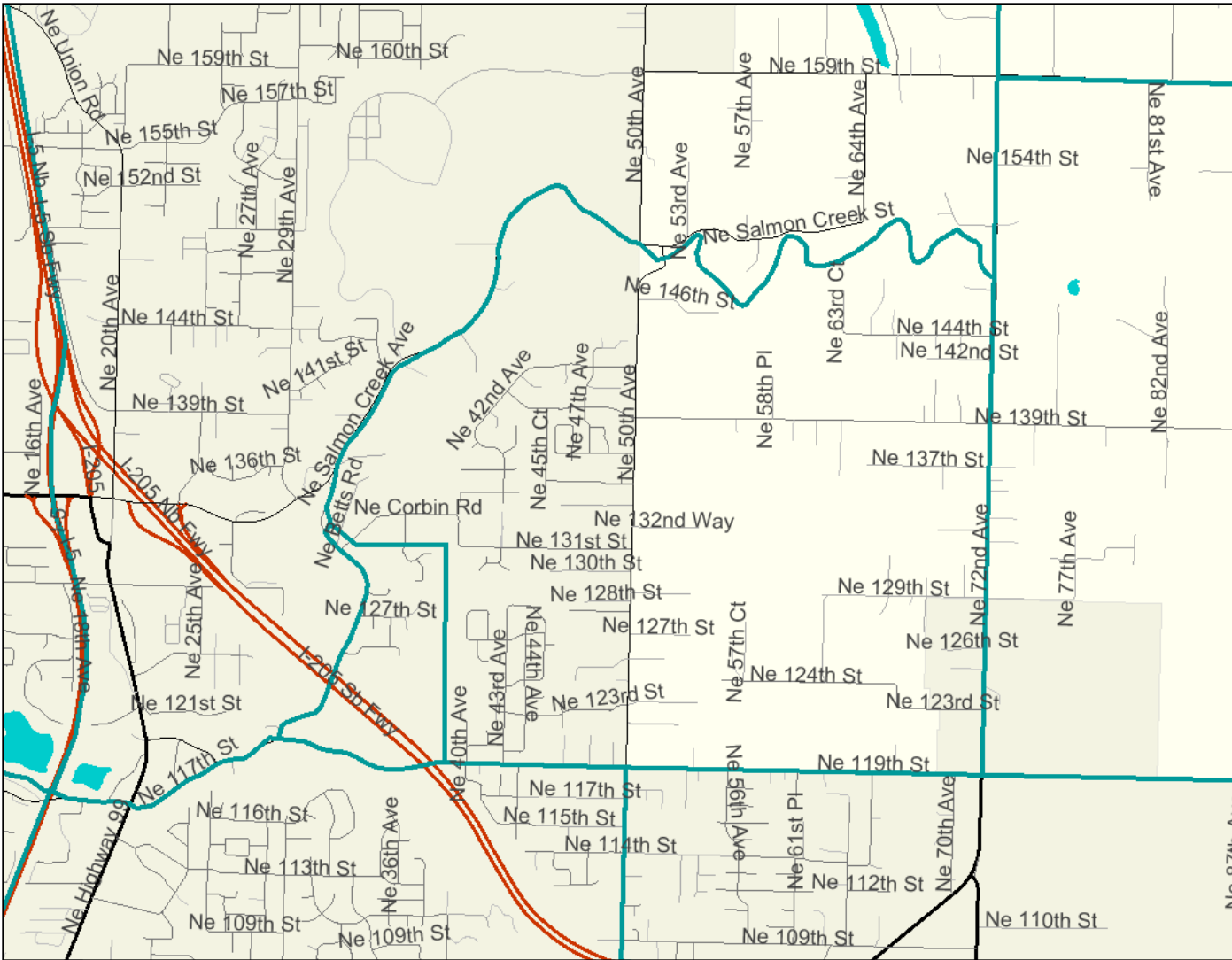


PHNA Boundaries



Legend

- Neighborhoods**
- Roads**
 - Alley
 - Arterial
 - DNR
 - DNR (Private Land)
 - Driveway
 - Interstate
 - Interstate Ramp
 - Primary Arterial
 - Private Roads
 - Private Roads w/o Names
 - Public Roads
 - SR Ramp
 - State Route
- Roadnames**
- Waterbodies**
- City Boundaries**
 - Battle Ground
 - Camas
 - Clark County
 - La Center
 - Ridgefield
 - Vancouver
 - Washougal
 - Woodland
 - Yacolt
- Urban Growth Boundaries**
 - Battle Ground
 - Camas county
 - LaCenter
 - Ridgefield
 - Vancouver
 - Washougal

Scale: 1:30,957



Map center: 45° 43' 10" N, 122° 37' 16" W

This map is a user generated static output from an Internet mapping site and is for general reference only. Data layers that appear on this map may or may not be accurate, current, or otherwise reliable. THIS MAP IS NOT TO BE USED FOR NAVIGATION.

Notes:
 Boundaries: West: 38 Ave. to 131 St. North: Salmon Creek Ave. Salmon Creek St., Salmon Creek to 72 Ave. East: 72 Ave. to 119 St. South: 119 St. to 38 Ave.