

Airports Sampling Plan

South Coast AQMD
Rudy Eden
Senior Manager
Laboratory Services

Sampling Arrays

Four Each - Runways and Downwind Community

- 24 Hour Lead, PM_{2.5}, and Carbonyl
- 8 Hour VOCs, and Carbonyl Samplers
- Continuous Carbon Monoxide (CO)
- Continuous Ultrafine Particle Counter
- Yellow Markers

Two Each - Areas to the Side of Runways

- 24 Hour Lead and CO Sensors
- Blue Markers

Siting Requirements

General

- Samplers Placed at Least 33 Feet From Trees
- No Air Flow Obstructions
- Setback From the Curb of Major Roadways
- Noise From Instruments

Runways and Downwind Community Sites

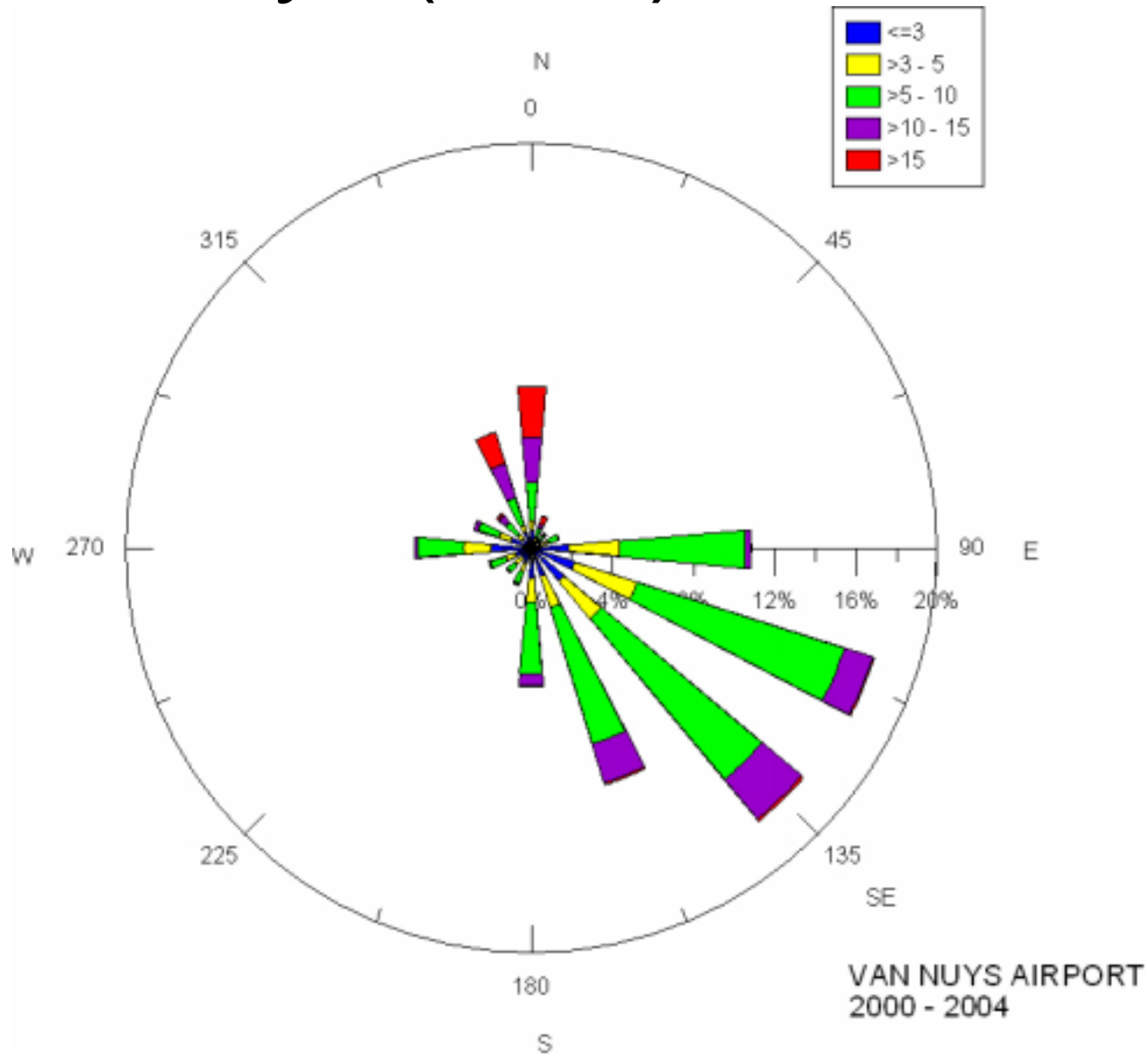
- No Containers Will Be Used
- 110 VAC, 40 Amp Service

Area to the Side of Runways

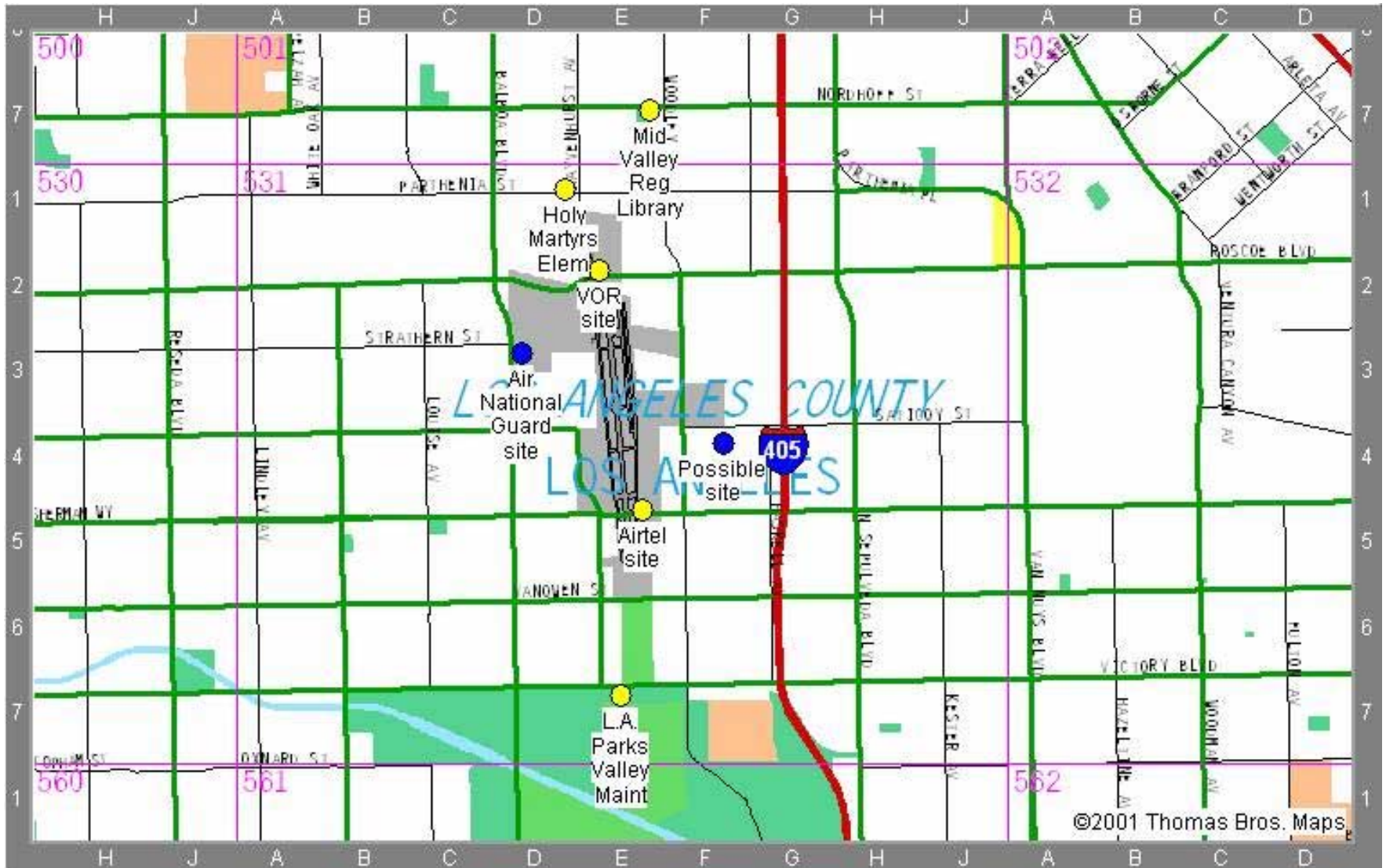
- 110 VAC, 20 Amp Service



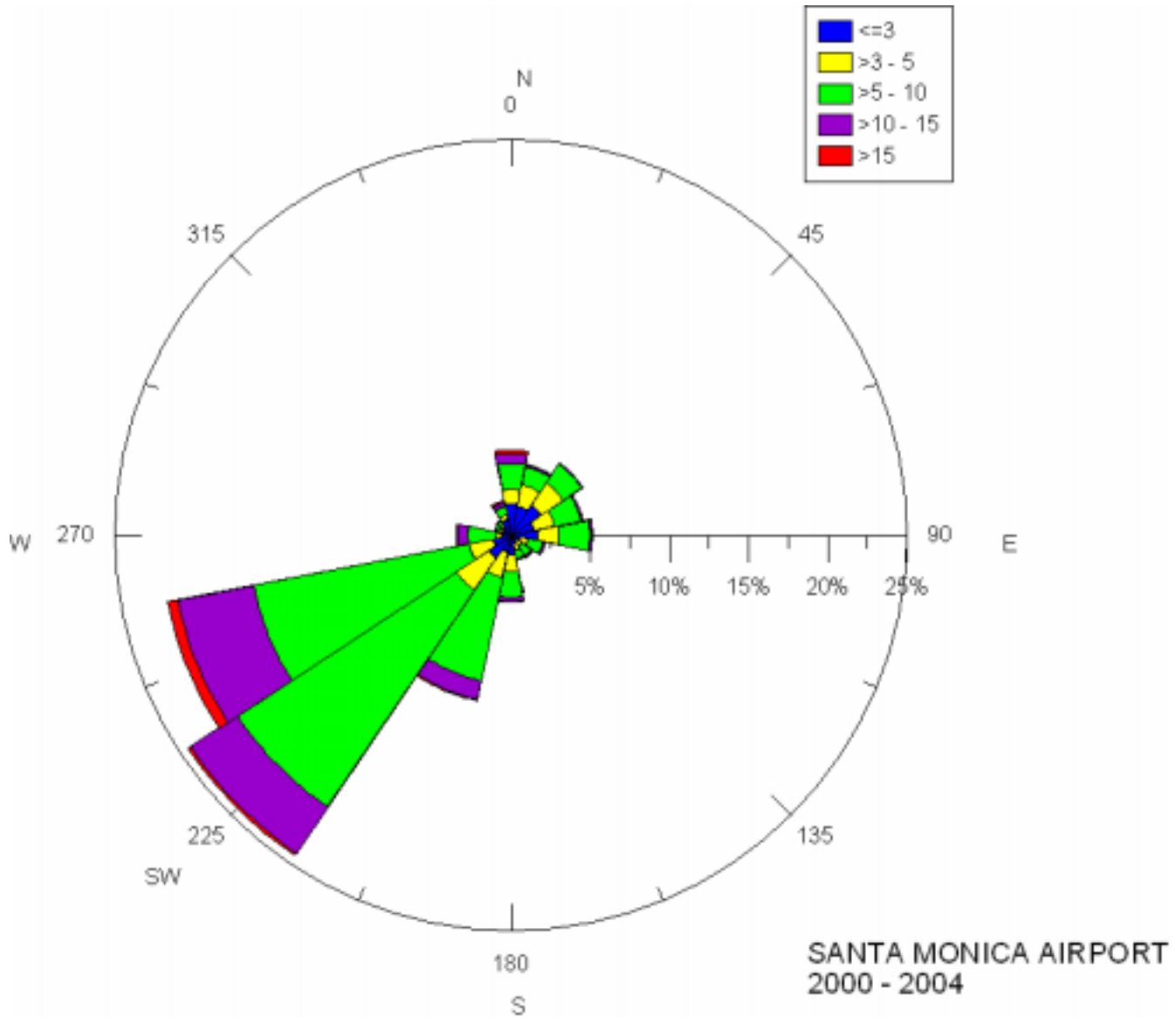
Van Nuys (VNY) Wind Rose



Van Nuys Airport Map



Santa Monica (SMO) Wind Rose



Santa Monica Airport Map

