

Being bored I wanted to see if the newer firmware in the SCS modems, that allows KISS mode in packet, would work. Yes it does.

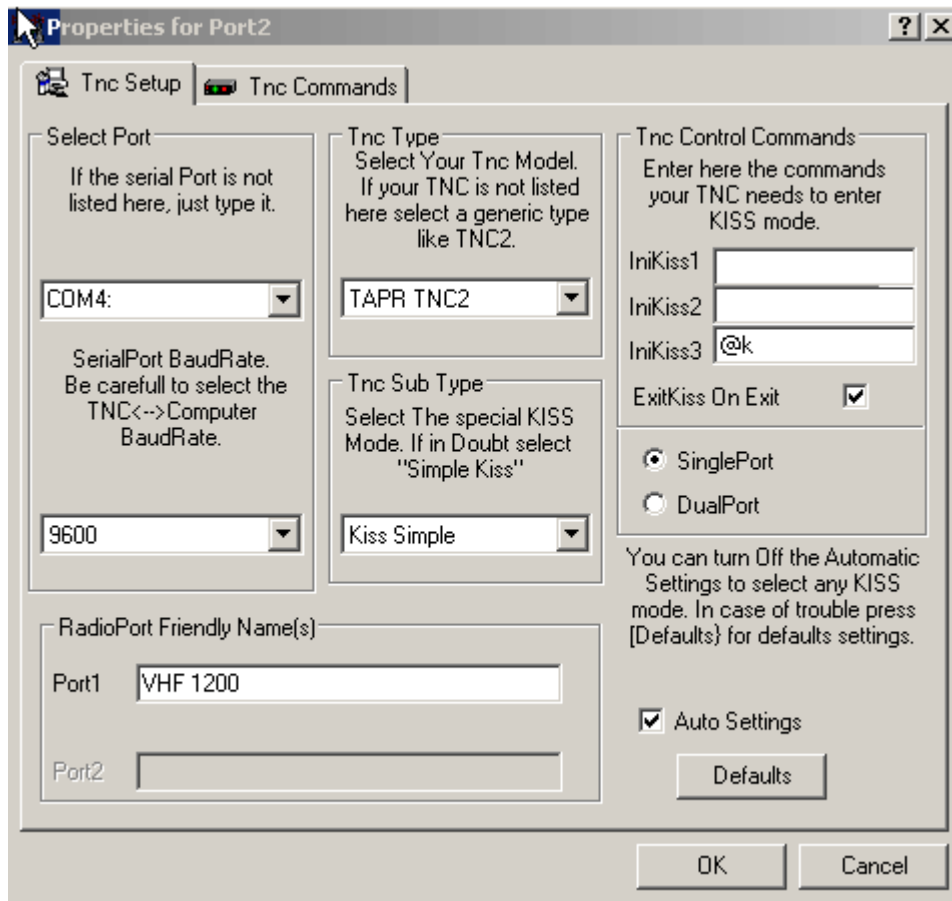
In fact I managed to get around the weakness of the built in TNC (Tasco), in my Kenwood TS-2000. Whenever I try to use the Tasco TNC with AGW pro to use PacLink, its reliability is poor.

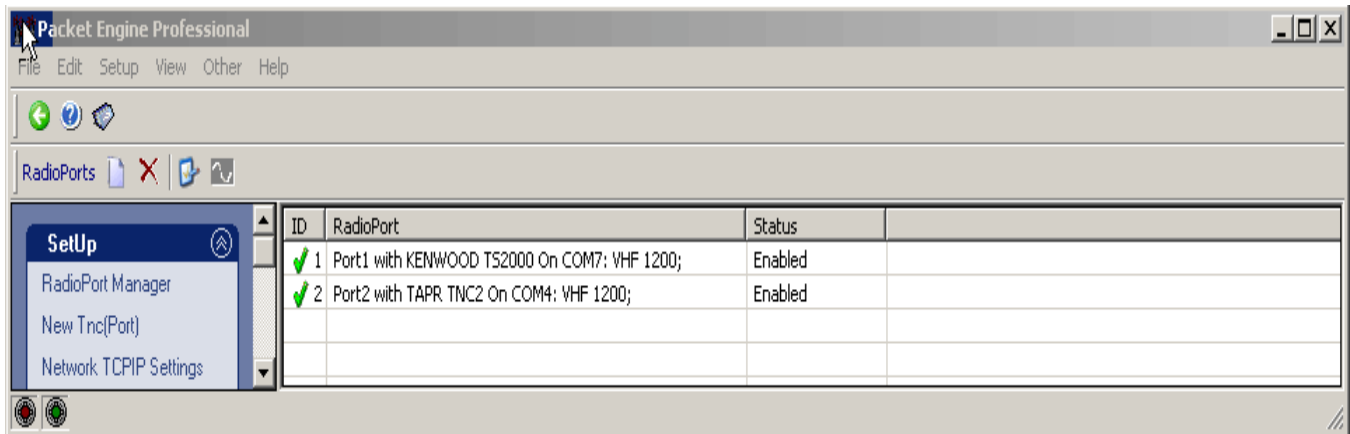
So I found a setup to use my SCS Modem with AGW pro, and Paclink. Then I can use the Kenwood's weak built in TNC with a standard terminal program.

Here are the screen shots to make the SCS play with AGW pro.

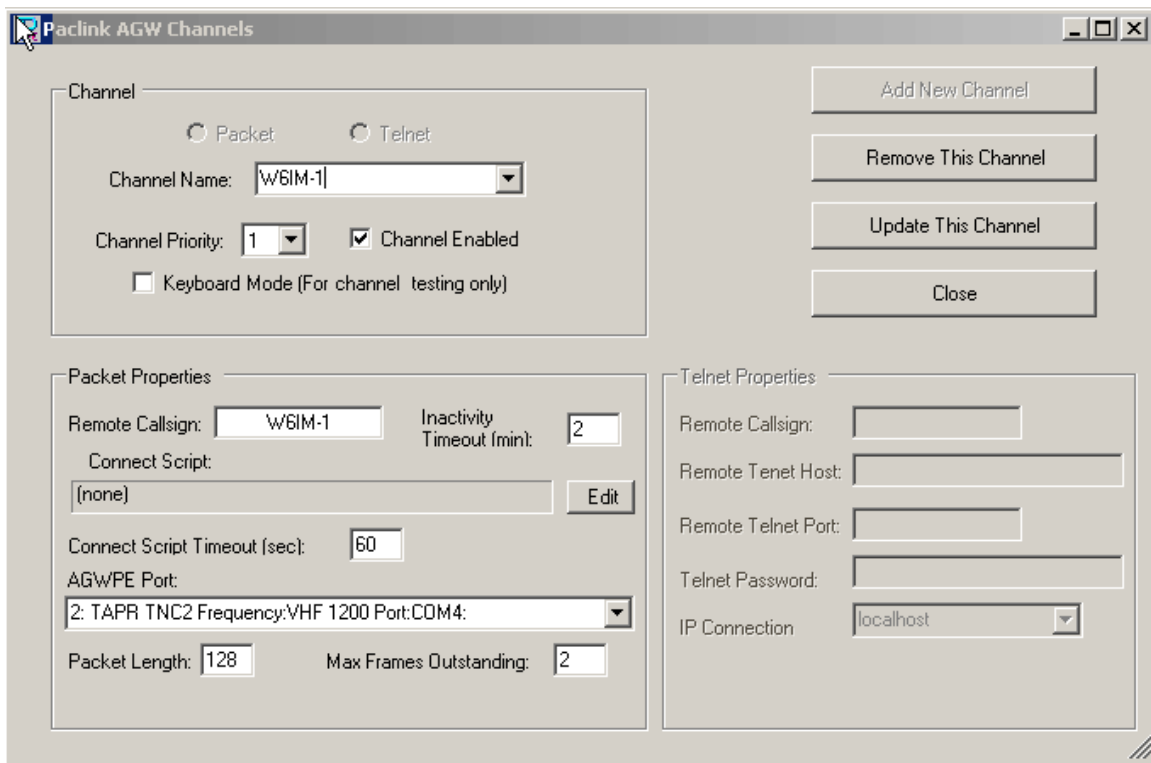
Trick one; use TAPR TNC

Trick two; place the @k (puts SCS into packet kiss mode), at bottom line (Reason is the SCS TNC needs the first two blank lines to act as CR to set up the auto baud)





PE PRO, port 1 is Kenwood, that I use AGWterm with for testing.  
SCS is port 2.



And the final screen shot of the set up for PacLink AGW.

Now this is for my setup, with my Kenwood TS-200 and the SCS modem on the main VFO. The built in Tasco modem is of course the sub-vfo.  
Bottom line is the SCS modem will work with AGW pro as a kiss TNC.  
I am sure this would hold true for terminal programs, though not tested here.

[by Mike Burton, N6KZB; December 2006]