

Joseph J. Kerski

Geographer
USGS – Box 25046 – MS 507
Denver CO 80225-0046 USA

jjkerski@usgs.gov
Tel: 303-202-4315
Fax: 303-202-4137

Career Goal

I seek to use my skills in geography and geographic information systems (GIS) to expand the use of spatial thinking in all sectors of society by fostering educational partnerships, conducting educational research, writing and editing texts and research articles, teaching standard and online hands-on courses, developing curricula, and training teachers, students, governmental, nonprofit, and business users at all levels.



Education

Doctor of Philosophy: Geography, University of Colorado, 2000.

Dissertation Title:

The Implementation and Effectiveness of Geographic Information Systems Technology and Methods in Secondary Education.

Emphases: Geography Education, Geographic Information Systems, Population Geography. GPA=4.0

Coursework Included: Geographic Teaching Materials, Research in Geographic Education, Disciplined Inquiry, History and Nature of Geography, Population Geography, Seminar in Geographic Information Systems, Internet in K-12 Education, Mathematical Demography, Web authoring independent study for Colorado Geographic Alliance, Quantitative Methods in Geography.

Ph.D. Students supervised: 2004-2005: Shannon White, North Carolina State University.

Master of Arts: Geography, University of Kansas, 1993.

Thesis title:

The Impact of the Bruce R. Watkins Roadway Project on Neighborhoods in Kansas City, Missouri.

Emphases: Geographic Information Systems, Population Geography. GPA=4.0

Coursework Included: GIS, Research Methods, Quantitative Methods, Historical Geography.

Bachelor of Arts, with Distinction: Geography, University of Colorado, 1984.

Emphases: Cartography, Computer Cartography. GPA=3.8

Coursework Included: Physical, cultural, regional, and historical geography, cartography, computer cartography, map use, Macro and microeconomics, environmental design, accounting, Spanish.

Additional Coursework and Training:

Education and Human Relations: Training Subject Matter Experts, Negotiation Skills.

GIS: Idrisi, ArcView, ArcInfo, ArcGIS, Maptitude, Geomedia, MapInfo, Image Analysis, Spatial Analyst, 3D Analyst, C Language, GRID, AML, Avenue.

Other: Web authoring, Physical Geology, Spanish, MSOffice, Dbase, Photoshop, Unix


Work Experience



Geographer and Cartographer
US Geological Survey

1989-present

(1) **Partnerships:** Foster educational partnerships among government, industry, professional societies, nonprofit organizations, academia, K-12 education; (2) **Scholarship:** Write and edit textbooks, articles, book reviews, flyers, posters to promote science and geography and geotechnology education; (3) **Teaching:** Create curricular materials, develop and conduct 40 workshops and courses annually on digital and analog geospatial applications, products, and services to a diversity of audiences; (4) **Research:** Conduct research on teaching and learning in geography and using geotechnologies; (5) **Communications:** Maintain education.usgs.gov and other web resources; create educational CDs, write press releases and articles, operate USGS information exhibits at 20 conferences annually; (6)

	<p><i>Supervisory Geographer US Bureau of the Census</i></p> <p><i>1985-1989</i></p>	<p>Geotechnologies: Create applications, databases, and maps to support the National Spatial Data Infrastructure for scientific projects using technical standards and computer procedures; conduct courses in GIS, spatial analysis, using geospatial data, and developing web resources.</p> <p>Conducted geography program training for wide variety of audiences, including planners and researchers; trained and supervised 120 staffpersons in computer mapping and geocoding; coordinated geography and statistical area programs with state, local and tribal governments and other data users; developed computer databases to control TIGER map production and geographic programs; conducted research and development in digital cartography.</p>
<p>Teaching Experience</p> 	<p><i>Adjunct Instructor University of Denver 2001-2006</i></p> <p><i>Online Instructor Eastern Michigan University 2005</i></p> <p><i>Instructor Denver Public Schools JeffCo Public Schools 2003-2005</i></p> <p><i>Instructor Sinte Gleska University Rosebud, South Dakota 2002-present</i></p> <p><i>Guest Instructor University of Texas-El Paso 2001-2002</i></p> <p><i>Guest Instructor University of Montana Missoula, Montana 2002-2005</i></p> <p><i>Adjunct Instructor Red Rocks College 1995-2001</i></p> <p><i>Visiting Scientist Program Participant Metropolitan State College 1993-present</i></p> <p><i>Adjunct Instructor Metropolitan State College 1994-1995</i></p> <p><i>Geographer, USGS 1989-present</i></p>	<p>Teach GIS theory and applications and public domain data courses through the University of Denver's GIS program. Create and implement all exercises, exams, and curriculum.</p> <p>Co-create educational GIS certificate program content; co-create all course materials and activities; teach online courses.</p> <p>Advise Emily Griffith Opportunity School on new GIS program; create all course materials; teach first course in program; serve as Spanish Instructor.</p> <p>Create and instruct the first online GIS course at the Rosebud Sioux's Sinte Gleska University. Advise university staff on design of program; teach hands-on workshops, foster partnerships between the tribe, the university, the communities, the schools, and the USGS.</p> <p>Serve as guest instructor for several GIS courses to build an international interdisciplinary GIS community in E-911 services, news media, regional councils, public works, wastewater treatment, and in other disciplines.</p> <p>Serve as guest instructor for University of Montana's online GIS course for educators. Answered technical and curriculum integration questions and worked with EOS staff.</p> <p>Created and maintained first GIS course at Red Rocks Community College; wrote successful grant proposal for GIS program strategic plan.</p> <p>Teach approximately 285 (thus far) hands-on classes and institutes at primary, secondary, and college level, on physical and cultural geography, GIS, remote sensing, cartography, and natural hazards, throughout Colorado.</p> <p>Created GIS curriculum/assessments; taught Advanced GIS and ArcInfo courses. Participated in campus-wide GIS implementation team.</p> <p>Teach 40 workshops annually for government, news media, Congressional, K-12, professors, the research community, general public, and other audiences on the use and application of spatial data, technology, and methods.</p>

Books and Book Chapters



- Kerski, Joseph J. *In Press*. GIS in Education. Chapter in *Handbook of GIS*. Forthcoming book from Blackwell Publishers.
- Bryan, Dale-Marie, Cecilia Minden-Cupp, and Joseph Kerski. 2006. *The Colorado River*. New York: Scholastic Library Publishing. ISBN 0516250337.
- Labella, Susan, Cecilia Minden-Cupp, and Joseph Kerski. 2006. *West Virginia*. New York: Scholastic Library Publishing. ISBN 0516249940.
- Kerski, Joseph and Simon Ross. 2005. *Essentials of the Environment*. United Kingdom: Hodder Educational Media and Oxford University Press. ISBN 0340816325.
- Kerski, Joseph J. *In Press*. Mapping for science. Chapter 2 in *California Science*. Textbook. Glencoe-McGraw Hill.
- Coulter, Bob and Joseph Kerski. 2005. Using GIS to transform the mathematical landscape. Chapter 22 in *Technology-Supported Mathematical Learning Environments: 67th Yearbook of the National Council of Teachers of Mathematics*. Reston, VA: National Council of the Teachers of Mathematics. ISBN 0-87353-569-3.
- Kerski, Joseph J. 2004. GIS for Citizenship Education, in *Geography and Citizenship Education: Research Perspectives*. Edited by Ashley Kent and Andrew Powell. Published for the International Geographical Union Committee on Geographic Education by University of London Institute of Education. ISBN 0-9539850-4-0.
- Kerski, Joseph J. 2003. Foreword. *Making Community Connections*. Redlands, California: ESRI Press.
- Malone, Lyn, Christine L. Voigt, Anita M. Palmer. 2003. *Community Geography: GIS In Action*. Redlands, California: ESRI Press. Served as technical editor.
- Malone, Lyn, Christine L. Voigt, Anita M. Palmer. 2002. *Mapping Our World: GIS Lessons for Educators*. Redlands, California: ESRI Press. Served as technical editor.

Columns

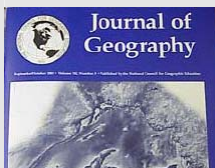
- Kerski, Joseph J. 2002-present. Geography Education Column: *Isn't That Spatial*. Appears 6 times each year, in each issue of the *Perspective* from the National Council for Geographic Education.

Media



- Kerski, Joseph J. 2006. *Geography for Students*. A featured interview subject in this series of DVDs produced by Schlessinger Media.
- Kerski, Joseph J. 1999. *Ten Cool Things About the USGS*. Served on planning team to create this video, produced by SceneThree, US Department of the Interior.
- Conducted broadcast for National Public Radio's *Weekend America* and also for Mesquite Independent School District's KEOM Radio, Texas. Appeared in numerous newspaper articles about geography and science.

Articles



- Kerski, Joseph J. *In Press*. Earth Visions: GIS in Indian Country. *Winds of Change*. American Indian Science and Engineering Society.
- Kerski, Joseph J. 2006. Mapping for understanding our changing world. *The Earth Scientist*. National Earth Science Teachers Association (22)1: 6-10.
- Kerski, Joseph J., Sophia Linn, and Rick Gindele. 2005. Mapping standardised test scores with other variables using GIS. *International Research in Geographic and Environmental Education* (14)3: 231-236.

- Linn, Sophia, Joseph Kerski, and Sarah Wither. 2005. Development of Evaluation Tools for GIS: How Does GIS Affect Student Learning? *International Research in Geographic and Environmental Education* (14)3: 217–224.
- Kerski, Joseph J. 2005. Mapping for understanding. *Access Learning: Cable's Guide To Education Resources*. Washington, DC: *Cable in the Classroom* (15)9, pp. 10-12.
- Kerski, Joseph J., Roger Palmer, and Anita Palmer. 2005. Jungle classroom—Geotechnology boosts education in Costa Rica's lowland rainforest. *GeoWorld* (18)7. July, pp. 42-44.
- Fox-Gliessman, Debra, and Joseph J. Kerski. 2005. Technology and the study of wildfire: Middle school students study the impacts of wildfire. *Meridian—A Middle School Technology Journal* (8). Winter.
- Kerski, Joseph J. 2004. The Global GIS project: Spatial analysis for the world. *Interaction* 32(3). Victoria, Australia: Geography Teachers Association of Victoria.
- Kerski, Joseph J. 2004. Analyzing the Earth with Geographic Information Systems. *NSS News*. Huntsville, AL: National Speleological Society. March.
- Kerski, Joseph J. 2003. Geography education across the Atlantic at the Geographical Association. *Journal of Geography* 102(5). National Council for Geographic Education.
- Kerski, Joseph J. 2003. The implementation and effectiveness of GIS in secondary education. *Journal of Geography* 102(3): 128-137. National Council for Geographic Education.
- Kerski, Joseph J. 2002. Introducing Geography and Technology into Science Through Biodiversity. *Meridian--A Middle School Technology Journal* (5): 1. Winter.
- Kerski, Joseph J. 2001. The Implementation and Effectiveness of GIS in Secondary Education. *International Research in Geographic and Environmental Education*. Fall.
- Kerski, Joseph J. and Alan Ward. 2000. GIS Education for Mapping Professionals. *Geomatics International Magazine*. July 2000.
- Kerski, Joseph J. and Steve Wanner. 2000. Mapping a Course in GIS and GPS in the High School Geography Curriculum. *Point of Beginning*. Business News Publishing, Inc.
- Kerski, Joseph J. 2000. Exploring Glaciation with USGS Resources. *Focus, Geography's Magazine*. Winter. American Geographical Society.
- The Implementation of GIS in American Secondary Education: Results from a National Survey. 1999. *Proceedings, 19th Annual ESRI User Conference*.
- The Effectiveness of GIS in High School Education. 1999. *Proceedings, 19th Annual ESRI User Conference*.
- Kerski, Joseph J. 1998. Teaching About Karst. *Focus, Geography's Magazine* 45(2): 15-21. Fall. American Geographical Society.
- Fits, Starts, and Headway: The Implementation of ArcView GIS-based Lesson Modules in the High School Geography Curriculum. 1998. *Proceedings, 18th Annual ESRI Conf.*
- The Impact of the Bruce R. Watkins Parkway on Neighborhoods in Kansas City, Missouri. 1993. *Master's Thesis, Department of Geography, University of Kansas*.
- USGS Generates Digital Maps for Thematic Cartographic Projects. 1993. *Geo Info Systems* 3(1): 36-41.

Others

Numerous articles and book reviews each year in: *People, Land, and Water* (US Department of the Interior Newsmagazine), *Spatial News* (GeoComm Corp.), *NCGE Perspective*, *AAG Newsletter*, *AAG Specialty Group Newsletters*, *Geography.about.com*, *Colorado Geographic Alliance News*, other newsmagazines, educational listservs, and sites-of-the-week services.

**Recent
Professional
Activities****Earthcaching, Geological Society of America, 2006.**

- Advise, create curriculum, and conduct workshops in the Earthcaching field-based geotechnology NGS-funded project.

Definitions Project, National Interpretation Association, 2006.

- Partner with 26 federal agencies and nonprofit associations to create metadata for environmental education and interpretive work.

National 4H GeoTechnologies Project, USDA and ESRI, 2003-2006.

- Partner with USDA and ESRI on curriculum development and teach webinars on the effective use of GPS and GIS in informal education settings.

Book Project, Geographic Education National Implementation Program, 2006.

- Co-author book that fosters teaching and learning using Virtual Globe technologies (such as Google Earth and NASA Worldwind) and web-mapping tools (such as The National Map and National Atlas).

Proposal to Create and Maintain NSDI Liaisons Web Resources in NGPO, 2006.

- Create template for proposal to author and maintain web resources for NSDI liaisons in the National Geospatial Partnerships Office, USGS.

Curriculum Development: Remote Sensing in Education, NASA and NCGE, 2006.

- Create curricular materials as part of NASA-funded project with the National Council for Geographic Education that use remote sensing technologies and imagery.

Education Portal Web Master, 2006.

- Create new and improve existing content for <http://education.usgs.gov> education portal, USGS.

Exploring Biodiversity and Urban Sprawl Along Colorado's Front Range, 2000-2006.

- Conduct workshops in the use of geographic techniques in biology education, write curricula using GIS, and serve on advisory board in NGS-funded project and beyond.

Exploring Geography Using Geotechnologies, New Zealand, 2005.

- Gave presentation on the importance of spatial thinking to society for the US Ambassador to New Zealand and the Ministry of Education; co-conducted two-week institutes in the use of GIS and GPS to examine geographic issues for groups of international teachers in New Zealand.

Examining Sustainability, Biodiversity, Ecotourism, and Geography Using Geotechnologies, Costa Rica, 2004-2005.

- Co-created and co-conducted 9-day institutes in the use of GIS and GPS to examine geographic issues for groups of international teachers in Costa Rica.

My Community Our Earth Project, 2005-2006.

- Partnered with and advised the Association of American Geographers and ESRI to conduct geography and watershed institutes and ongoing curriculum development for teachers in Hawaii and Gulf of Mexico regions.

Partnerships for 21st Century Skills, 2004.

- Served with a National Council for Geographic Education Task Force on the Partnership for 21st Century Skills, to include geography on a critical set of documents for the US Department of Labor and US Department of Education (www.21stcenturyskills.org).

Book and Web Resource Reviews, College Board, 2004.

- Reviewed books and Internet resources for College Board web site to support educators teaching AP Human Geography.

Assessment of GIS Program, Burlington County College, New Jersey, 2004.

- Created 30-page assessment and recommendations for college on current status and future of college's GIS program.

Geography and GIS Web Site Assessment, 3Clix.Info, Hawaii, 2004-2005.

- Identified, assessed, and rated web-based geography and technology resources for 3Clix Company.

Distance Learning and GIS Curriculum Development, North Carolina School of Mathematics and Science, 2004-2005.

- Created on-line and in-school curriculum, gave keynote addresses, and taught classes in the use of geotechnologies for faculty and students.

Standing Rock Sioux GIS Workshop, South Dakota GIS Workshops for Educators, 2004.

- Created and conducted workshops in the use of GIS for tribal, scientific, and educational applications at two tribal headquarters and at the South Dakota Department of Education.

National Council for Geographic Education, 1995-2006.

- Elected to NCGE Executive Board, Research and External Relations, 2002-2004. Create and maintain educational partnerships between NCGE and other educational organizations. Conducted presentations and workshops on GIS in education, cultural geography, mapping, imagery, glaciation, karst, geography field work, and other topics.

Spatial Education Coordination with Orton Family Foundation, 2000-2004.

- Coordinated curriculum development and training for educators with the Orton Family Foundation's Community Mapping Program.

Virtual Immersion in Science Inquiry for Teachers, 1998-2003.

- Conduct workshops in the use of GIS for science and geography teachers in this NSF-sponsored project, contribute to online learner collaboratory, serve on advisory board.

Geography Education Magazine for Science (GEMS), 2002-2004.

- Sought and received National Geographic Society funding for this electronic magazine portal to federal educational resources; advise web designer; create content; publicize.

Jefferson County, Adams-12, and Horace Mann Middle School, Educational GIS Implementation Projects, Colorado, 1996-2005.

- Co-wrote three approved grants, created natural hazards, oil, county demographics, and neighborhood analysis GIS-based lessons, and instructed teachers and students.

National GIS Institutes, Texas State Workforce Development Program, Texas State University, 1998, 1999, and 2003.

- Co-trained instructors from across the USA and Canada in GIS techniques in the first such institutes ever conducted.

Satellite Broadcast, Southwest Indian Polytechnic Institute, Albuquerque, 1999.

- Participated in broadcast to all Native American colleges and universities about applications of GIS on tribal lands and in tribal schools.

First GIS Institute for Preservice Educators, Roger Williams University, 1999.

- Trained Department of Education faculty from across the USA on GIS in the first institute for education faculty who train teachers.

Native American GIS / Internet Institute, Northern Arizona University, 1999.

- Co-trained 15 Native American educators and tribal environmental professionals across the USA and Canada in GIS and Internet techniques.

GIS For Educators Courses, University of Denver and Colorado School of Mines, 1999-2003.

- Co-conducted institutes for Colorado K-12 teachers in GIS and GPS.

***Selected
Conference
Workshops
and Papers*****National Council for Geographic Education, 1995-2006.**

- Conduct workshops on the environment, glaciation, karst, mapping, GIS, GPS, and more.

Geographical Association, UK, 2001-2004.

- Create and nurture partnerships between the Geographical Association and other

organizations, conduct workshops, present papers.

International Geographical Union, 2003.

- Present paper on the interaction between GIS and citizenship education at the IGU's Commission on Geographical Education conference, University of London.

National States Geographic Information Council, 2006.

- Conducted presentation for researchers at the Pacific Institute for Research and Evaluation on social and environmental study in Baltimore; educational partnership efforts.

National Interpretation Association, 2002-2006.

- Conduct workshops on GPS for conference attendees.

New Zealand Geographical Society, 2003 and 2005.

- Conduct workshops across New Zealand for instructors integrating GIS technology and methods into their curricula.

National Indian Education Association, 2001-2005.

- Conducted presentations on cooperative agreement between USGS and Rosebud Sioux; on GIS in Native American education, and hands-on GIS workshops.

Association of American Geographers, 1994-2006.

- Presented papers on Exploring Biodiversity Along the Front Range, Analyzing State Population Centers from 1900 to 1990, and other geographic research.

ESRI User Conferences, San Diego, California, 1998-2006.

- Presented papers and user demonstrations on implementing and assessing GIS in the secondary school curriculum; operated USGS exhibits; organized map gallery.

International Conference on GIS In Education, San Bernardino, California, 2000.

- Presented papers and workshops on implementing and assessing GIS in education and operated USGS information exhibit.

World 2000 Conference on Teaching World History and Geography, University of Texas.

- Conducted presentation on using GIS to teach university-level world history and geography.

Association for Educational Communications and Technology, 1999.

- Conducted workshop on pedagogical implications of the use of GIS.

Western Social Science Association, 1998.

- Presented research on population polarization on the Great Plains.

Geo-Tech Texas, Dallas, 1997-2005.

- Conducted workshops for educators on technology in geography education, field work, teaching about Antarctica, and the use of topographic and thematic maps to uncover mysteries in the cultural and physical environment.

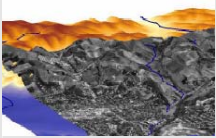
Annual Meetings, Geological Society of America, 1996-2004.

- Co-conducted workshops for teachers with ESRI on GIS and earth science.

**Recent
Research
Projects**

The Implementation of GIS Technology and Methods in Education. 2003-2006. Survey and analysis of how and why educators who have attended a GIS training have implemented GIS into their curricula.

MyWorld GIS Project. 2004-2006. Curriculum development and advising committee support on this GIS software developed with a grant from NSF to Northwestern University.



Global GIS Project. 2003-2005. Curriculum development on natural hazards, population, land use, mining, manufacturing, and other themes based on Global GIS data, ArcView Data Publisher, and customized tools.

Mapping the Colorado Standardized Achievement Program (CSAP), 2003-2004. Examine the spatial patterns of Colorado's standard achievement test scores at different scales and grade levels.

Exploring Biodiversity in the Denver Metropolitan Area, 2000-2002. Research project, teacher training institutes, and development of lessons that examine open space, population growth, and diversity of plant and animal species, to illustrate that geographic concepts can be effectively taught in biology courses.

Historical Floodplains Along the Rocky Mountain Front Range, 2001-2005. Created lessons that use historical and current aerial photography, GIS, local building and floodplain data, and ground photographs to analyze the real threat of floods along with land use issues.

Retail Spatial Diffusion Modeling, 2002. Create lessons that use GIS and historical point data to examine point diffusion across the country using Sonic Drive-In as the model.

Exploring the Titanic Using GIS, 2002. Write 210 question, 80-page, 17-part unit that uses GIS to examine the route, sinking, rescue, and discovery of the ocean liner *Titanic*.

Mapping the Future with USGS Educational Resources, 1996-2003. Examined and tested USGS resources for earth science and geographic education, including the development of digital datasets and lesson modules.

Site Selection for Rare Plants, Loess Hills, Nebraska, 1998-2004. Lessons focused on selecting sites to study rare species in the Loess Hills using GIS.

State Historical Population Centers, 2001-2002. Co-developed methods (with ESRI) and examined social and economic reasons for shifting changes in state population centers.

Geography Awareness Week Flyer and CD-ROM, 2000. Research and production of flyer and CD-ROM for 150,000 geography educators worldwide.

The Polarization of the Great Plains, 1920-1990. 1998. University of Colorado. Analysis of population decline and redistribution on the Great Plains.

Creation of, maintenance of, and training of data users in Internet spatial data access. 1995-2003. Create and maintain Internet resources for Colorado Geographic Alliance. Create and maintain RockyLink geospatial resource center; train users in Internet tools and resources.

Multimedia Authoring Evaluation. 1996. Researched multimedia authoring packages.

Production of CD-ROM for GIS-based research in Alaska. 1995. Researched, created, and presented the first Rocky Mountain Mapping Center demonstration CD-ROM containing digital spatial data, metadata, viewing packages, standards, and applications to educate data users and market programs for potential federal, state, and local cooperators.

Redesigning USGS Graphic Map Products. 1994-1995. USGS. Researched, designed, and tested methods for redesign of USGS 1:24,000 and 1:100,000-scale maps using ArcInfo.

Developing a Marketing-Demonstration for DLG-E Data Model. 1994-1995. USGS. Developed GUI's that illustrated the advantages of the feature-based digital line graph "enhanced" model over the spatial-based model and the applications of DLG-E data.

The Impact of Freeways on Urban Environments. 1993. University of Kansas. Developed field and GIS-based research tools to analyze the economic and social impacts of freeways in time and space in urban neighborhood.

Grants and Awards

Award for Geography Education, Travelocity, 2006.

Fellow, Royal Geographical Society. Inducted 2003.

Geography Education Magazine of Science. 2002. \$2500. National Geographic Society Education Foundation.

NCGE Dissertation Award. 2001. \$500. One of two recipients.

ESRI Special Award for Outstanding Contribution to GIS. Given at ESRI User Conference, 2000. Sole recipient.

Geospatial Information Technology Association. Research Grant. \$1,000. Sole recipient.

Boulder Valley School District, Tech 21 Grant. 1999. \$10,000. Co-Principal Investigator.

Red Rocks Community College. 1999. Proposal for GIS Certificate Program. \$1,000. Co-Principal Investigator.

National Geographic Society Education Foundation. 1997 and 1999. Jefferson County and Adams 12 School Districts. \$25,000 and \$30,000.

Human Resources Initiative, US Department of the Interior. A Sharable USGS Central Region Visitors Center. FY 1999. \$49,500. Principal Investigator.

Human Resources Initiative, US Department of the Interior. A Scientific CD-ROM for the 1999 Geography Awareness Week Packet. FY 1999. \$20,000. Principal Investigator.

ESRI / International Geographic Information Foundation. 1998. Research Grant. \$1,000. Sole recipient.

Geographic Education National Implementation Project. 1998. Dissertation Grant, \$2,000. Sole recipient.

National Geographic Society Education Foundation. 1998. Smoky Hill High School, \$7,500. Assist in grant writing and partner on project.

Geospatial Information Technology Association. 1997. Ed Forrest Award, \$2,000. Sole recipient.

National Geographic Society Education. 1996. Horace Mann Middle School, Denver. \$10,900.

Memberships

Royal Geographical Society 2003-present

Association of American Geographers [AAG] 1992-present
 Geography Education Specialty Group Secretary-Treasurer 1998-2000
 Specialty Groups: Education, GIS, Cartography, Cultural Geography

National Council for Geographic Education [NCGE] 1995-present
 Board Member, Research and External Relations 2002-2004

Geographical Association (UK) 2001-present

Colorado Geographic Alliance [COGA] 1995-present
 Board of Directors 2001-2003

Geospatial Information Technology Association 2005-present
 K-12 Education Committee 2005-present

Association for Supervision and Curriculum Development (ASCD) 2001-2002

Colorado Scientific Society [CSS] 1990-2005

Geological Society of America [GSA]	1998-1999
National Geographic Society [NGS]	1987-present
National Speleological Society [NSS]	1993-present
Southwest Arc (ESRI) Users Group	1989-present
Urban and Regional Information Systems Association [URISA]	1993-1998
The Nature Conservancy	1999-2005

References

Dr. A. David Hill
 Professor Emeritus - Department of Geography
 University of Colorado – Campus Box 260
 Boulder CO 80309-0260
 (303) 492-6760 - adh@colorado.edu

Mr. George Dailey
 ESRI, Inc.
 3109 Knox St - Suite 303
 Dallas TX 75205
 (214) 599-0894 – gdailey@esri.com

Dr. Barbara P. Battenfield
 Department of Geography
 University of Colorado - Campus Box 260
 Boulder CO 80309-0260
 (303) 492-3618 - barbara.battenfield@colorado.edu

Ms. Ann Johnson
 University Coordinator
 ESRI, Inc.
 380 New York Street
 Redlands CA 92373
 (909) 793-2853 - ajohnson@esri.com

Ms. Anita Palmer
 Educator
 1409 S. Lamar - Loft 302
 Dallas TX 75215
 (214) 533-8376 – anita@gisetc.com

Mr. Richard S. Dieter
 Cartographer
 US Geological Survey
 P.O. Box 1290
 Conifer CO 80433
 (303) 838-4355 - richardd_01@hotmail.com
