

The Harvest Fields Are White

John 4:35

NOTE: GUITAR IS TUNED TO **D**; chords are positional. Alternatively, this could be played in standard tuning, but it will be in **E**, much too high for congregational singing. Alt. tuning vocal range = D to F (m10th)

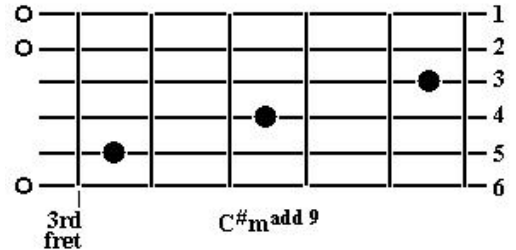
intro: C[#]m^{add9}

Don't for-get my sons, oh my chosen ones,
The harvest fields are white,
Nor my daughters fair, nor the children there,
May they walk the streets of gold. (6) (2)

I have shown you grace, and pre-pared a place,
The harvest fields are white.
Go reap what's sown, bring my family home,
To walk the streets of gold.

With the workers few, does it grieve you too?
Ask the Lord of the harvest;
To send shepherds there - may it be your prayer,
For all to walk the streets of gold. (6) (2)

With the shadows long, hear the evening song:
The harvest fields are white.
I'm re-tur-ning soon, by the blood-red moon,
To take you to the streets of gold.
To take you to the streets of gold.



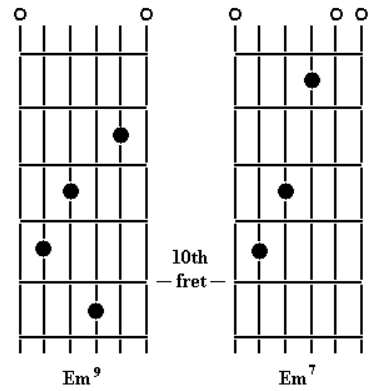
E E^{sus4} E
(3) (1) (4)

E E^{sus4} E
(3) (1) (4)

(mod to G maj – 1st chord is Em @ frets 8-10)

(4) (2) (2)

The Harvest Fields Are White (continued)



Em^{add9} Em⁷ C²
 Don't for-get my sons, oh my chosen ones,
 C² G
 The harvest fields are white,
 Em^{add9} Em⁷ C² G
 Nor my daughters fair, nor the children there,
 Am⁷ D Em^{add9} C G G^{sus4} G
 May they walk the streets of gold. (6) (2) (3) (1) (4)

Em^{add9} Em⁷ C²
 I have shown you grace, and pre-pared a place,
 C² G
 The harvest fields are white.
 Em^{add9} Em⁷ C² G
 Go reap what's sown, bring my family home,
 Am⁷ D G
 To walk the streets of gold.

Em^{add9} Em⁷ C²
 With the workers few, does it grieve you too?
 C² G
 Ask the Lord of the harvest;
 Em^{add9} Em⁷ C² G
 To send shepherds there - may it be your prayer,
 Am⁷ D Em^{add9} C G G^{sus4} G
 For all to walk the streets of gold. (6) (2) (3) (1) (4)

Em^{add9} Em⁷ C²
 With the shadows long, hear the evening song:
 C² G
 The harvest fields are white.
 Em^{add9} Em⁷ C² G
 I'm re-turning soon, by the blood-red moon,
 Am⁷ D Em^{add9}
 To take you to the streets of gold.
 Am⁷ D Em^{add9}
 To take you to the streets of gold.
 C D G G^{sus4} G G^{sus4} G G^{sus4} G
 To take you to the streets of gold.
 (4) (4) (3) (1) (3) (1) (3) (1) *