

Fort Wayne Bonsai Club Newsletter

Vol. 12 Issue 5

May 17, 2008

Spring Bonsai Show At Foellinger Freimann Conservatory

The next meeting will be Saturday, May 17th at the Foellinger-Freimann Botanical Conservatory. This is our spring show, set up begins at 9:00 am, the show opens at 10:00 am and lasts until 4:30 pm. We will have a brief meeting in a corner at approximately 10:30 am. We will have either the first or second room just past the main desk at the conservatory. We will be making an attempt to divide the trees into groups of older, more established bonsai trees, intermediate trees and newer younger trees. We would like all members to bring trees whether they have worked on them for years or are just beginning.

Cat Nelson has agreed to do some demonstrations periodically throughout the day so there will be educational opportunities. Anyone else who would like to work on trees may also use them as demonstrations.

We will also have a table of plants, and any other assorted bonsai items for sale. This can include pots, books, tools or anything else you would like to sell. The club will keep 10 % of the proceeds, the conservatory requests 10% and the seller will receive the balance. The seller sets his prices so please bring your sale items with price tags or be prepared to tag them.

We will also discuss our upcoming schedule of events during the meeting. We have discussed a field trip for the June meeting, we just need to decide where. Newer members think about what you would like to have included in future meetings and bring your suggestions.

Those of you who missed the Cherry tree festival missed a great time. There was a lot of interest in Steve Moore and Zack Walter's presentations and our bonsai display. We were in a great location in the the Performing Arts Center indoors out of the rain and cold. We had Steve, Zack, Nancy Jimenez & Darlene there during the day doing demos and talking with people about bonsai. Over 20 people

signed up wanting to receive our newsletter. Hopefully they will come to the show also.

Kathy's Korner

It's Time!

It is time to ready your trees and accents for our May show! By the time you are reading this, you will have less than a week to get your trees ready. I hope you have been planning and preparing before now.

Even though ours is not a "judged" show, it is our club's presentation to the public. So we want to get our trees ready for company, so to speak. This show may be the first time an individual has seen bonsai. Don't you want them to see a tree that displays your love and the passion you've invested in the creation?

As your friendly, neighborhood librarian, I've done some looking around to see what I could find regarding getting a bonsai ready to be displayed. Mostly, I found the same kinds of things that I found when I was getting an iris ready for a show, or a daylily, or any of the many entries at a flower and garden show. ***Your primary goal is to make your entry look the best that it can look.***

Remove any damaged or oversized leaves. Pinch back or prune growth to keep a nice compact shape to your tree, whatever your design is. If branches have died during the winter think about what you need to do for the benefit of the tree. Prune off the dead branch? Make a jinn? Do something! Don't just leave it there.

Check your wiring. If it is cutting into the tree, get it off NOW! Rewire if necessary. Keep in mind that the public is watching and new members are watching to see what to do with their trees. Bonsai Bob demonstrated several methods of wiring at our workshop last month. Put that experience to use. If you need wire, I think the club still has some to sell. If you don't want the whole set, check around, maybe someone else will go halveses with you.

For heavens sake, pull any weeds out of your pots! It is one thing to try to simulate a natural landscape with your tree, but dandelions and other weeds that are out of sync with the size and form of your tree, do not contribute to the plant's design. Remove any other debris, such as old pine needles, grass, maple flowers, bark mulch, leaves, and etc.

Clean off any moss growing on the tree trunk or branches. Some people think this looks really cool, but it is deadly to your tree. Let it grow around the tree if you like, but get it off the tree. You can use an old toothbrush to remove it.

Clean the dirt and lime scale off the pot! Yuck! How bad does that look?! You can clean them up pretty good using vegetable oil or baby oil. I use an old rag, pour a generous amount of oil on the rag and begin rubbing it in. If you have a big build up, you may have to use a scraper of some kind before you put the oil on.

Plan to display your tree on a stand of some kind. Jerry and Darlene have a wide variety of stands that they bring to the show. But, they might not have the kind of stand that will best display your plant. If you have a cascade, you want to give it some height. Think about the shape and color of your pot and the tree. What kind of stand will best suit your tree?

Now I give you this advice as your sister! Not to discourage you! If you have just one tree READY to display, or 12 trees READY to display, bring it (them) to the show. Be open to ideas and suggestions. Ask for help. If I know my friends in the club, there is always someone (everyone) willing to give advice. If you have 25 plants that you love, but you can only get 5 of them ready for the show, then bring 5!

One of the sources that I read talked about displaying each tree as an individual tree. Give it enough space to realize its beauty and worth. Do we really have to show every one of our trees at every show? Let's take our best to the show. If you have only one or two trees, then

it (they) are your best! Bring them! Let's have a great time at the show. Meet the public, admire each other's artistic achievements and enjoy the addiction of bonsai!

Kathy

2008 Calendar of Local or Nearby Events

May 17, 2008 9:00 Set up for our Spring show which starts at 10:00 am and ends at 4:00 pm at the Conservatory

June 21, 2008 A field trip to be determined or a lesson on wiring.

July 19, 2008 Our Carry-in Summer Picnic at the Kittles. 11:30 am Club will supply the meat. Best Club tree contest, Best dead tree contest.

August 16, 2008 To be determined

September 20, 2008 To be determined.

October 18, 2008 9:00 Set up for our Fall show which starts at 10:00 am and ends at 4:00 pm at the Conservatory

November 15, 2008 To be determined

December 20, 2008 11:30 am Christmas Luncheon Location to be determined.

THINGS TO DO IN MAY

By May most deciduous trees have come into leaf and new candles on pines have sprouted, pinch most deciduous tree's new shoots back to two leaves and pine candles back by one half to two thirds. Watering should now routinely be done, if we don't get much rain. Cuttings of evergreens, junipers and spruces mainly, may still be taken. Air-layering of deciduous and evergreens can be continued. Pinch back long shoots of deciduous trees.

Your feeding, pinching, watering, and pruning schedules should be in full swing by now. Fertilizer blocks are great to use for continuous gentle feeding. May is not too late for repotting or field collecting, but this requires increasingly careful after-care as the season progresses. Trees repotted or collected

in May should be protected from strong sun and wind until strong growth is observed, and leafy trees may suffer from transplant shock, so roots should be left intact as much as possible. Careful use of insecticides and fungicides becomes increasingly useful at this time of year, **always read and follow manufacturer's directions**, but keep in mind that trees in containers may do better with slightly diluted formulations. Watch wired branches carefully to avoid unsightly spiral scars from bark growing over the wires, deciduous trees in particular can expand very quickly in May and June.

Most of our tropical's can be moved outdoors now -middle of May-after last frost date. All of them by June.

If you have questions, write them down so they are not forgotten and then ask someone.

with credit to great swamp bonsai society for a portion of this article

Ed

The club has the following items for sale:

Wire assortments: club members \$40.00, subscribers \$42.00, non-members \$45.00

Micromax micro-nutrients: \$5.00 for members, subscribers \$6.00, non-members \$7.00

Bonsai soil, shopping bag of 2 scoops: \$5.00 for members, subscribers \$6.00, non-members \$7.00

New Fertilizer blocks. ½ lb bag \$2.50 for members, Subscribers \$3.00, non-members \$3.50 1 lb bag \$5.00 for members, Subscribers \$5.50, non-members \$6.00

We also have bonsai slabs for forest plantings. Prices range from \$25.00 to \$50.00. Call Darlene or Ed regarding purchase.

All these products are great buys and priced lower than retail if they are even available in this area. Call or email Darlene or Ed if you want products brought to this meeting.

Fort Wayne Bonsai Club - Meeting Minutes from 4-19-08

Reported by Cat Nelson

Today's meeting was the Bonsai Bob workshop and picnic held at the Kittle residence. It was a bring-a-tree for styling advice workshop; a great time was had by all who participated. Bob Eskeitz (Bonsai Bob) hails from the Madison area and has been the president of the Badger Bonsai Society for several years. He travels around WI and the Midwest as a guest speaker and workshop leader for both bonsai clubs and other garden organizations. Bonsai Bob brought along a selection of trees and pots for sale, in addition to the workshop.

There was no 'formal' meeting structure at the workshop, but just a chance to have one on one time with Bob. Bob looked at every tree brought, offered his design ideas with a personalized sketch, and then offered practical advice on how to do the physical work on the trees. He was very helpful and enjoyed every challenge thrown his direction. The day itself, while threatening to rain several times, remained pleasant for working outside. A wonderful lunch of ribs and multiple side dishes was had by all, with there being a large selection of things to eat and a large choice of deserts.

THE MABA CONVENTION

Are you planning to visit MABA 2008? It's going to be a great chance to see fine trees and rub shoulders with experienced people who share our love of the art. The convention will be held from June 12-June 15, in Indianapolis. For full info, including schedule of events, location, and more, go to <www.MABA2008.org>

A few details here. The exhibit will be open Friday, the 13th, from around 10:30 AM until 5:00 PM; and then on Saturday, the 14th, from 9:00 AM-5:00 PM. The vendor list includes Brussel Martin, Sara Raynor (outstanding potter,) Mike DeVore (Indiana's own tropicals specialist,) Andy Smith (collector of ponderosas,) and a dozen others.

The exhibit and vendors' area are open to the public. All other events require registration, which is available on-line at the MABA2008 website. One other event is open to the general public: an introductory program on Saturday morning called "Bonsai 101." This will be a one-hour presentation on bonsai, followed by a guided tour of the exhibit. It will be ideal for anyone who's interested but doesn't know much about bonsai yet. Attendance is limited to 25 people, and there is a \$10 deposit (refunded at the program.) If you or someone you know is interested, let me know (treebeard20@gmail.com) and I'll get info on how to sign up.

If you attend this event please let this editor know so we can talk on the phone and I can write a brief article on the impressions of members attending the Maba convention. Or better yet you write up an article about attending the convention and email it to me. Plantlady6@yahoo.com

The Bonsai Traveler

by Cat Nelson

This last weekend took me to the 2008 All-Michigan Show, held annually in Grand Rapids, MI. The show moves around on which weekend in May its held on, depending on the Meijer Garden's schedule, and it was very early this year. Some of the trees that came down from northern Michigan were just starting to burst bud for the show. Newly opening leaves made the deciduous trees a highlight of the show, especially the maples with their slightly red-tinted new foliage. Also set up for the show was a section of trees from the Meijer Garden's bonsai collection, a vendor sales area, and a suiseki display.

They had a few trees that were in bloom, notably some early azaleas and a nice crab apple forest. There were two very impressive satsuki azaleas that will be gorgeous when they open up in a few weeks, though were still impressive for this show with their large trunks and nice ramification. Another notable tree was a very old black pine that had some very good needle reduction on it. At one end of the room they had a whole table of suiseki, with quite a number of nice stones on display. I recognized some of the stones as ones that vendors have brought to the Chicago Shows in the past, though they were still impressive to see.

The All-Michigan show is not a judged show, perse, but they do have a people's choice award. Visitors to the show can cast votes on the tree that they like the most, and leave the artist a few comments if they'd like to. The maples stole the show this year, and I don't blame them. The People's Choice winner was a fabulous Japanese maple with golden new leaves lightly edged in red. Spring is definitely a good season for it to be shown in. One of my favorite trees from the show was another maple, this one done by Eric Newton of the Kalamazoo club. While trees would normally not be shown fully wired, I could still appreciate the amount of effort that went into the wiring of the maple. And I think the naturalness of the end result is going to be a fabulous tree once the branches have set. That maple was also looking very good with some fresh, new foliage on it.

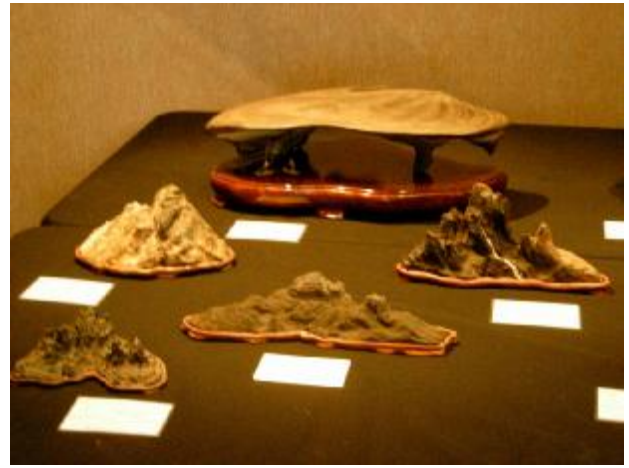
The All-Michigan show is a nice way to start off the bonsai show season, and is traditionally one of the first shows of the year in the Midwest. I personally like the chance to do some shopping before the other major shows coming up this month, notably the Chicago Spring Show and our very own Fort Wayne Spring Show. The only negative thing that I can say about the All-Michigan is that the lighting in the room is terrible for photography.



Azalea



Black Pine



Suiseki



Crab Apple Forest



Wired Maple



P C Maple

Bonsai Care Sheet- Bald Cypress

A year ago we passed out last years club trees, the bald cypress. If yours are not growing bring them to the show so we can check them out and discuss them. Below you will find a care sheet on this tree. It was published in this month's newsletter a year ago but I thought you might need to brush up on the care after overwintering your trees. If you have questions bring them to the show.

Species:	Common name:	Bald cypress
	Botanical name:	Taxodium distichum
	Japanese name:	Rakuusho

Varieties: Pondcypress; named cultivars: Illinois Sentinel and Illinois Chief - both hardy.

Yoshimura reference: # 233

Advantages: A long underrated or even ignored species, the American Bald Cypress possesses great potential as a bonsai. And, a word or two from past experience as to why the bald cypress has been so long overlooked: in my early years with bonsai, and even today in some circles, if the tree was not a Japanese native, it couldn't be a bonsai. I have seen bald cypress in Japan although their owners denied the trees' origins - U.S.A. Also long thought to be a southern, water tree, experience has shown neither is strictly true. Its foliage, like feathers, its magnificent buttress, its taper - all coupled with free budding, ease of accessibility and fast growth rate demand that every American bonsai artist grow at least one.

Disadvantages: To have a good bald cypress the tree requires a undulated trunk buttress which comes with age. A suggestion - find a twenty foot one in a nursery and stump it to two feet. Bald cypress will grow in this area but must be germinated from northern seed or rooted from a northern tree. Some fine examples grow on the IPFW Campus on the South side of the Parking Garage and another grows in the Kittles back yard.

Bonsai Potential: 9 on a scale of 1-10.

Growing location: Full sun but as a bonsai or container plant, protect from hot afternoon summer sun.

Watering: Bald cypress will grow better near water than in it. Legend has it that for success as a bonsai, the pot must be kept in a water tray. I find it does better with being thoroughly watered along with insuring good drainage. In its native habitat the water surrounding the cypress is just that: surrounding. The roots are in heavy clay if necessary but prefer well-drained soil.

Propagation: Cuttings under mist; hardwood in winter or by seed.

Fertilizing: ½ strength, balanced.

Over-wintering: Keep well mulched, out of sun and wind.

Styling: Literati, groves, informal, formal
NOTE: Cypress "knees" have long interested bonsai growers but since their function is controversial, I wouldn't expect them to form. In the wild they don't transplant well and rarely form in captivity.

A more detailed care sheet is available at the following web addresses in 2 parts:

http://dallasbonsai.com/bonsai_tree_care_TomM_BaldCyperus1.html

http://dallasbonsai.com/bonsai_tree_care_TomM_BaldCyperus2.html

Below are some pictures of bald cypress bonsai for your inspiration. The 4th one was collected by Bonsai Bob in Florida and may be coming to Fort Wayne to join Michael Himes Bonsai collection.

I am happy to report that the 5 that Jerry and I got as club trees and purchased extra all survived the winter and leafed out nicely. I expect them to eventually make a very nice small Cypress forest.

Darlene

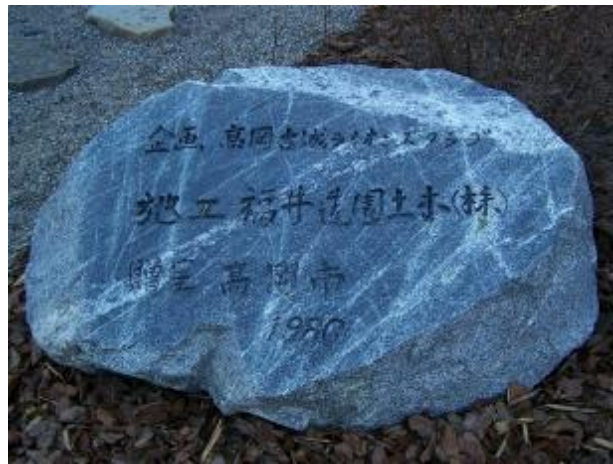


Japanese Garden With Bonsai Bob



OOOOPs!!!

I have had a computer operator problem and lost the pictures that Barb took of Bonsai Bob's workshop. Barb is on vacation in Yellowstone so I am not able to get another copy so we will have to wait till next month to print them. So sorry. Darlene



Fort Wayne Bonsai Club
17725 Lima Road
Huntertown, IN 46748