

PART I GENERAL

1. INTRODUCTION

The purpose of this manual is to provide service information which can assist servicing dealers. This manual covers Single-Cylinder, 3.0 H.P. to 7.5 H.P., Air-Cooled, Two-Cycle, Outboard Motors which have engines manufactured by Tecumseh Products Company.

2. MODEL IDENTIFICATION

The identification plate for the complete outboard is located on the swivel bracket beneath the engine, the underside of the engine, or on the transom mounting bracket, depending on the model and year of the outboard as shown in Figure 1. If for some reason the identification plate must be removed, always replace when assembling. Always list model and serial numbers when corresponding.

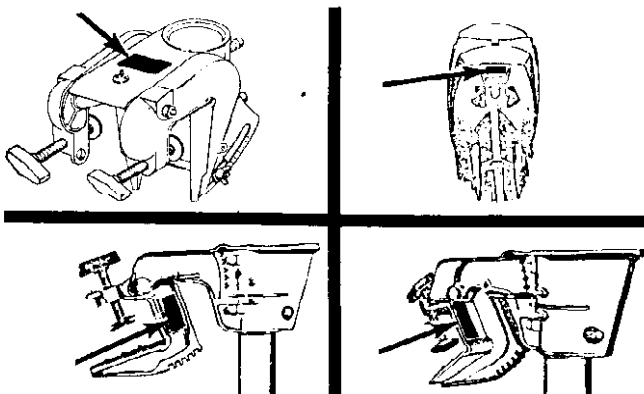


Figure 1. Views showing typical locations of the identification plate.

3. ENGINE IDENTIFICATION

- A. The identification of an **ESKA** single-cylinder engine will be found on a tag shown in Figure 2. Refer to Figure 3 for the different tags used and explanation of the build date code. The **TYPE NUMBER** must be included in any parts orders to assure the delivery of correct parts. Always refer to **TYPE NUMBER** in correspondence concerning the engine.
- B. When repairing an engine by using a short-block, be sure that the original engine tag is installed in a similar position on the shortblock. All identification tags on shortblock should remain to identify the shortblock.

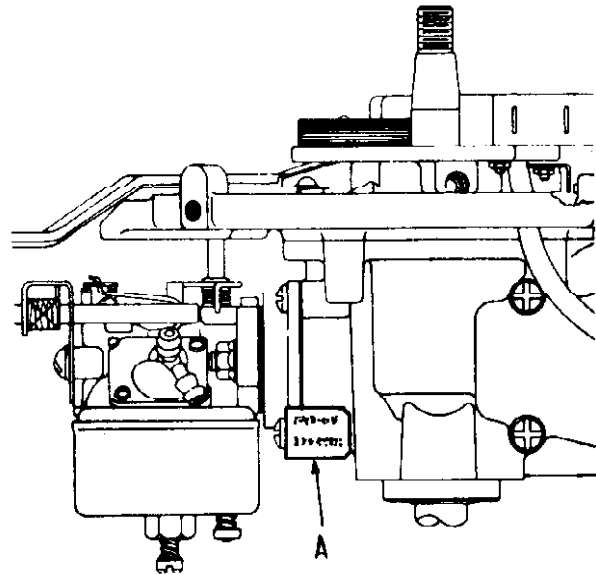


Figure 2. Proper location of engine identification tag (A).

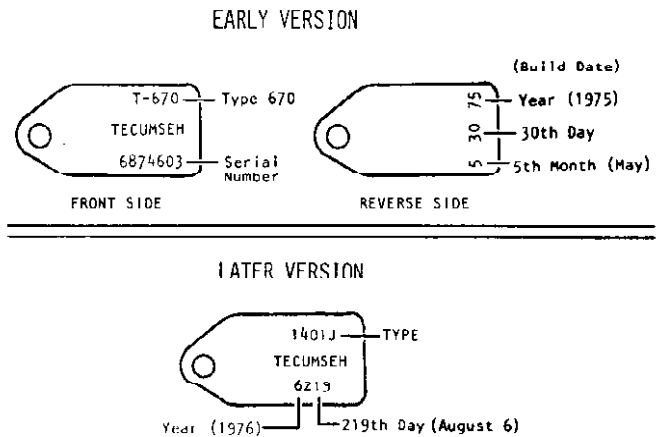


Figure 3. Typical Identification Tag.

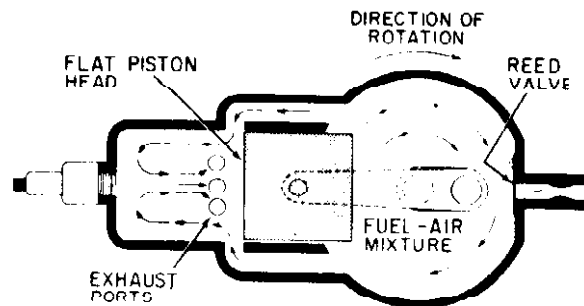


Figure 4. Loop scavenge engine with reed valve.

4. ENGINE DESIGN

- A. Figure 4 illustrates the loop scavenge design