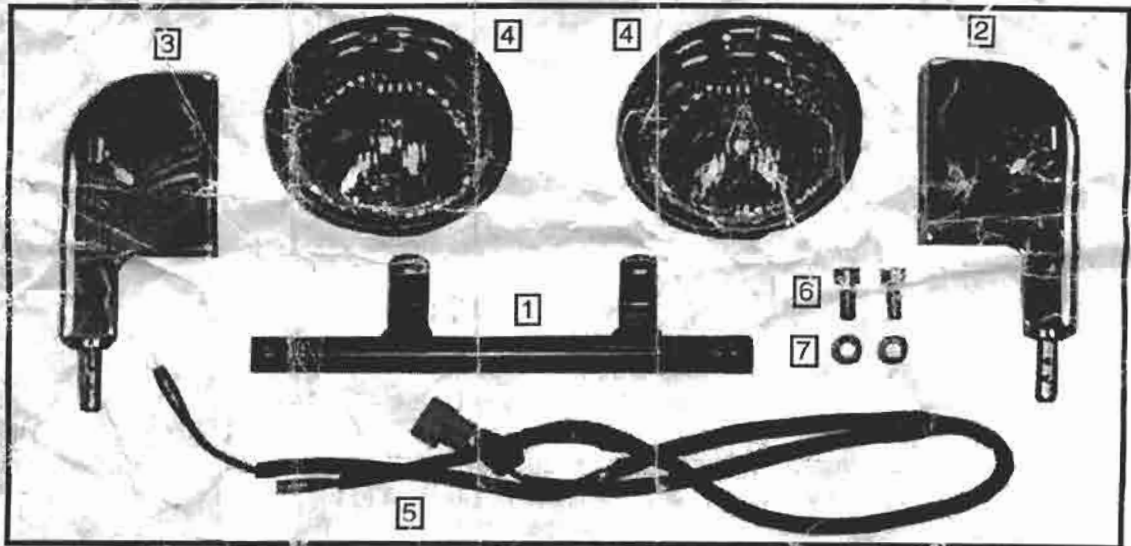


Description: **Lightbar Assembly** Part Number: **99950-70276**
 Applications: **Suzuki VL800 Intruder Volusia** Installation Time: **1 hr**
 Weight: **6 Lbs.**

Contents

Ref.	Description	QTY
1.	Lightbar Mounting Bracket	1
2.	Left Spotlight/Turn Signal Mount	1
3.	Right Spotlight/Turn Signal Mount	1
4.	Spotlight	2
5.	Wiring Harness	1
6.	M8-1.25x20mm Socket Head Bolt	2
7.	8mm Lockwasher	2
8.	99950-70276-001 Replacement Lamp Assembly	
9.	99950-70276-002 Replacement Lamp Visor	
10.	99950-70276-003 Replacement Sealed Beam	
11.	99950-70276-004 Allen Set Screw Set	
12.	99950-70276-005 Bolt/Washer Replacement Kit	



Tools Required

Tools Description
Phillips Screwdriver
14mm Wrench
14mm Socket
3mm Allen Socket
5mm Allen Socket
Ratchet
Torque Wrench
Silicone Sealer Suzuki Part #99000-31120



Important

WARNING
CAUTION
NOTE

Please read this manual and follow its instructions carefully. To emphasize special information, the symbol **⚠** and the words **WARNING**, **CAUTION** and **NOTE** have special meanings. Pay special attention to the messages highlighted by these signal words:
NOTE: Indicates special information to make maintenance easier or instructions clearer.

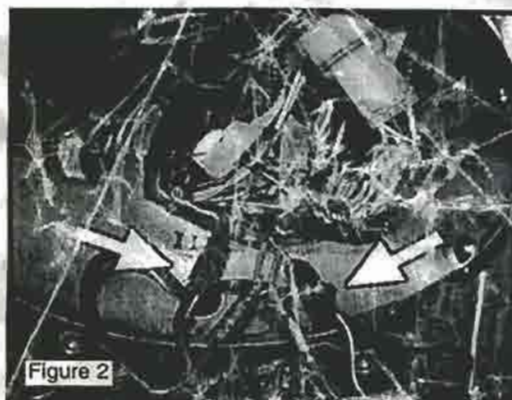
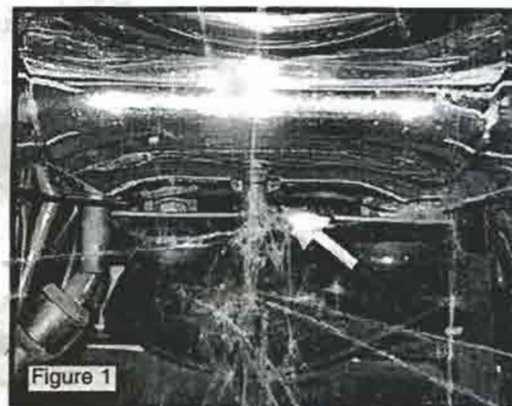
⚠ WARNING
 Indicates potential hazard that could result in death or injury.

CAUTION
 Indicates potential hazard that could result in vehicle damage.

GENUINE SUZUKI ACCESSORIES

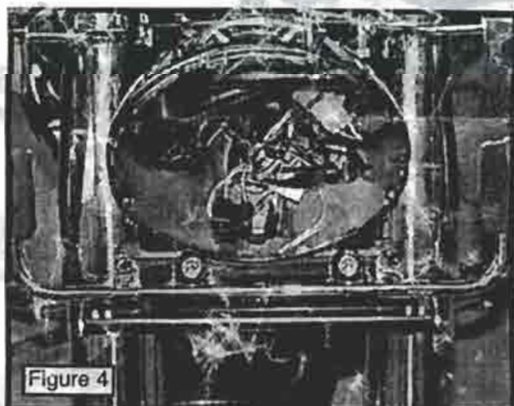
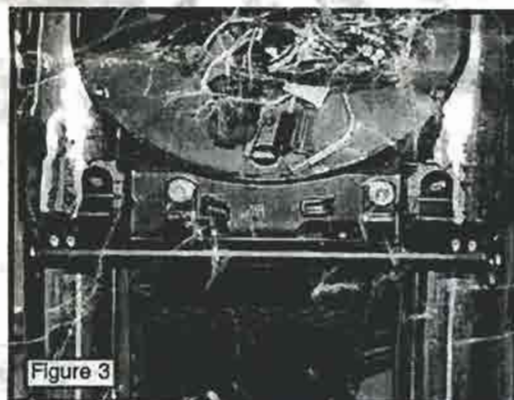
Preparation Prior to Installation

- 1) Place the motorcycle securely on its side stand.
- 2) Remove the bolt and rubber well nut from the underside of the front turn signal cover. Pull the front turn signal cover forward and off by pulling evenly on both ends. See Figure #1.
- 3) Remove the headlight rim and bulb assembly by removing the flathead screw on each lower side of the headlamp housing. To remove the headlight rim assembly, pull the lower edge of the rim out first, then up off the top holding tabs. Pull the black headlight plug from the bulb and set the assembly and two screws aside.
- 4) Remove the turn signals by unplugging the gray and black wire plug connectors and the brown-to-gray, and green-to-gray wires. Note the wire color for reconnection. Pull the turn signal leads from the headlight housing and from underneath the routing clips. Loosen and remove the turn signal mounting nuts and then remove the turn signals from the mounting bracket. See Figure #2.
- 5) Remove and discard the two M8-1.25x12mm socket head bolts from the turn signal mounting bracket. Remove the turn signal bracket.



Installation

- 6a) **Installation w/o windshield, Part #99950-72015**
Place the lightbar bracket over the turn signal bracket and mount them to the original location on the fork clamp using the supplied M8-1.25x20mm socket head bolts and 8mm lockwashers. Tighten the bolts to 16 lb-ft (23N.m). See Figure #3.
- 6b) **Installation w/ windshield, Part #99950-72015**
The windshield mounting bar is attached to the upper and lower fork clamps with four bolts. Two M8-1.25x40mm bolts are supplied with the windshield for the top mount, use the provided M8-1.25x20mm socket head bolts and 8mm lockwashers for the lower mount. After loosely mounting the upper portion of the windshield mounting bar place the lightbar mounting bracket over the lower windshield mounting brackets and under the windshield support bar. Mount the brackets to the lower fork clamp using the supplied hardware. Tighten bolts to 16 lb-ft (23 N.m). See Figure #4.
- 7) Remove the rubber boot and plastic nut off the wire harness switch button and feed the button through the hole in the side of the left spotlight/turn signal mount. Thread the plastic nut on about halfway and then place the rubber boot over the nut. Continue tightening the rubber boot until the nut and boot are tight against the spotlight/turn signal mount.



- 8) Mount the left and right turn signals to the indicated hole on the left and right spotlight/turn signal mounts using the original nut. The left turn signal has the grey plug and the right has the black plug. Make sure the turn signals are pointing forward and fully tighten the nut. See Figure #5. Use silicone sealant where the turn signal leads enter the turn signals to prevent water from entering the turn signals.

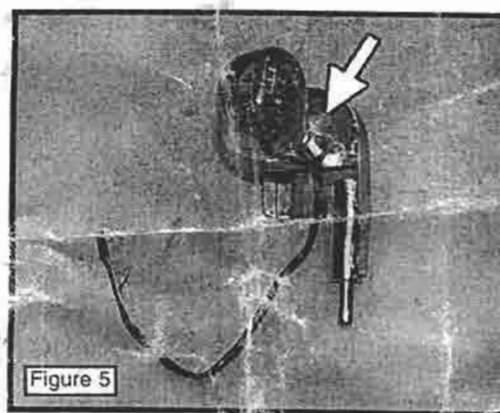


Figure 5

- 9) Loosen the four set screws in the lightbar mounting bracket. Insert the left and right spotlight/turn signal mounts into the end of the lightbar mounting bracket. Line up the two recessed holes in the spotlight/turn signal mounts with the set screws and fully tighten the set screws. See Figure #6.

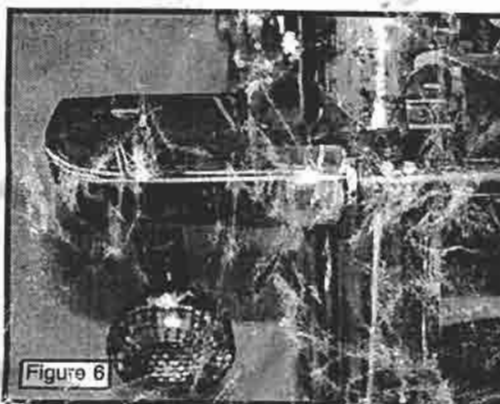


Figure 6

- 10) Using the hardware provided with the spotlights, mount them to the spotlight mounts on the lightbar. Position the spotlights and fully tighten the hardware. Attach each white wire from the spotlight to the corresponding red wire in the lightbar wire harness. Attach each green wire from the spotlight to the corresponding black wire in the lightbar wire harness. See Diagram #1 and Figure #7.

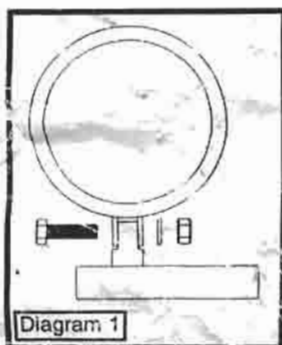


Diagram 1

- 11) Detach the white lightbar connector block from the wires in the wiring harness. Make sure that you note the location of the wires in the block. Feed the wires up through the hole in the headlight housing. Place the wires back into the connector block in the original locations. Attach the wiring harness connector block to the loose white connector block inside the headlight housing. See Figure #8.

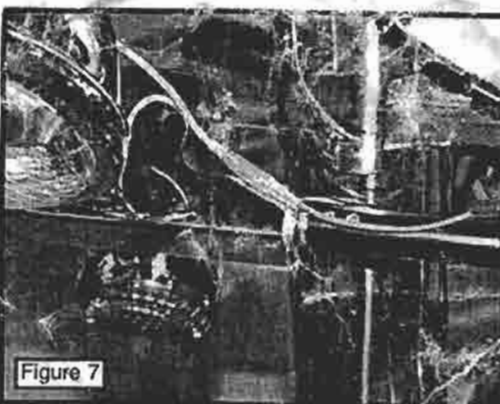


Figure 7

- 12) Route the turn signal wires through the hole in the headlight housing. Connect the black and grey plugs, and the brown-to-grey and green-to-grey turn signal lead wires. Use the wiring clamps inside the headlight housing to secure all wires. Before continuing with the installation, check that the turn signals flash on the correct sides and that the spotlights are lit. You may need to depress the button on the lightbar. See Figure #8.

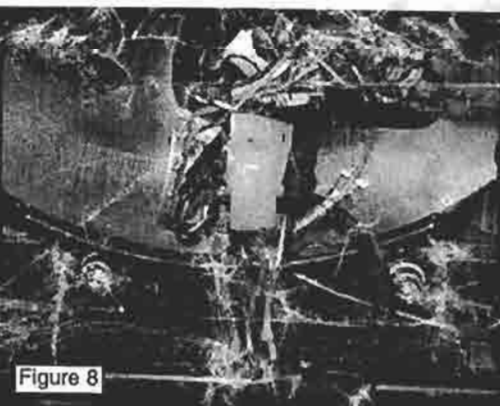


Figure 8

- 13) Reinstall the headlight rim and bulb assembly by using the two original screws. Be sure that the black plug is secure on the headlight bulb leads. Check for proper headlight operation.

- 14) Press the front turn signal cover into the original rubber grommets. Push the rubber well nut into the lower mounting hole in the cover and tighten the bolt until the cover is secure.

NOTE: Periodically check the tightness of the mounting hardware, and tighten if needed.

WARNING

Operating the spotlight switch while riding can be hazardous. Removing a hand from the handlebars can reduce your ability to control the motorcycle.

Always keep both hands on the handlebars during operation.